



Smithsonian Institution

Harvard-Smithsonian Center for Astrophysics

Project PHaEDRA - Williamina P. Fleming - Clusters and Faint Stars #23

Extracted on Aug-29-2022 02:55:05

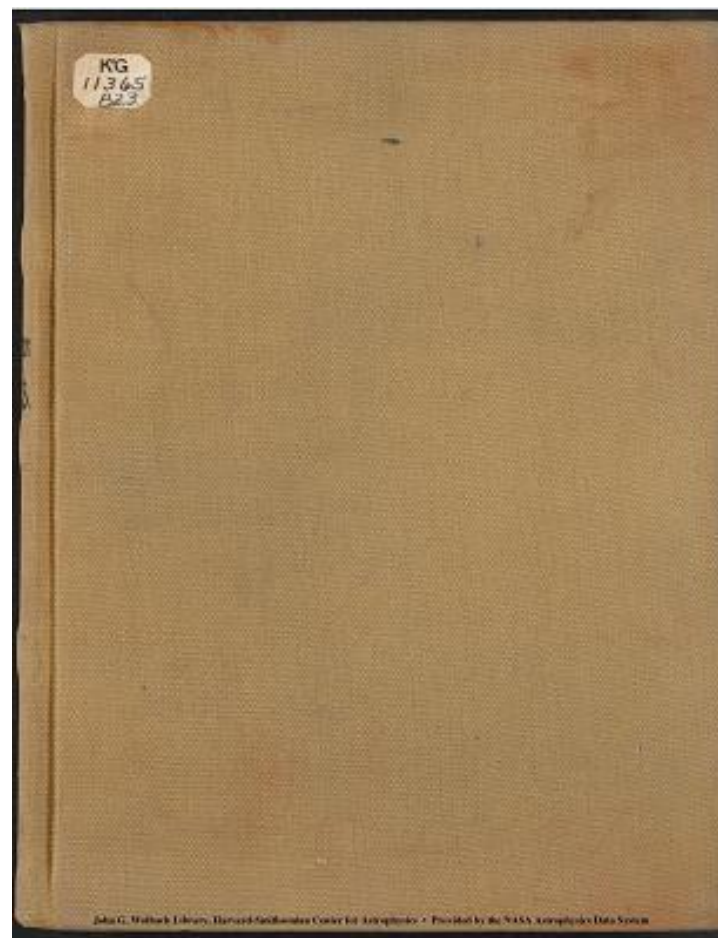
The Smithsonian Institution thanks all digital volunteers that transcribed and reviewed this material. Your work enriches Smithsonian collections, making them available to anyone with an interest in using them.

The Smithsonian Institution (the "Smithsonian") provides the content on this website (transcription.si.edu), other Smithsonian websites, and third-party sites on which it maintains a presence ("SI Websites") in support of its mission for the "increase and diffusion of knowledge." The Smithsonian invites visitors to use its online content for personal, educational and other non-commercial purposes. By using this website, you accept and agree to abide by the [following terms](#).

- If sharing the material in personal and educational contexts, please cite the Harvard-Smithsonian Center for Astrophysics as source of the content and the project title as provided at the top of the document. Include the accession number or collection name; when possible, link to the Harvard-Smithsonian Center for Astrophysics website.
- If you wish to use this material in a for-profit publication, exhibition, or online project, please contact Harvard-Smithsonian Center for Astrophysics or transcribe@si.edu

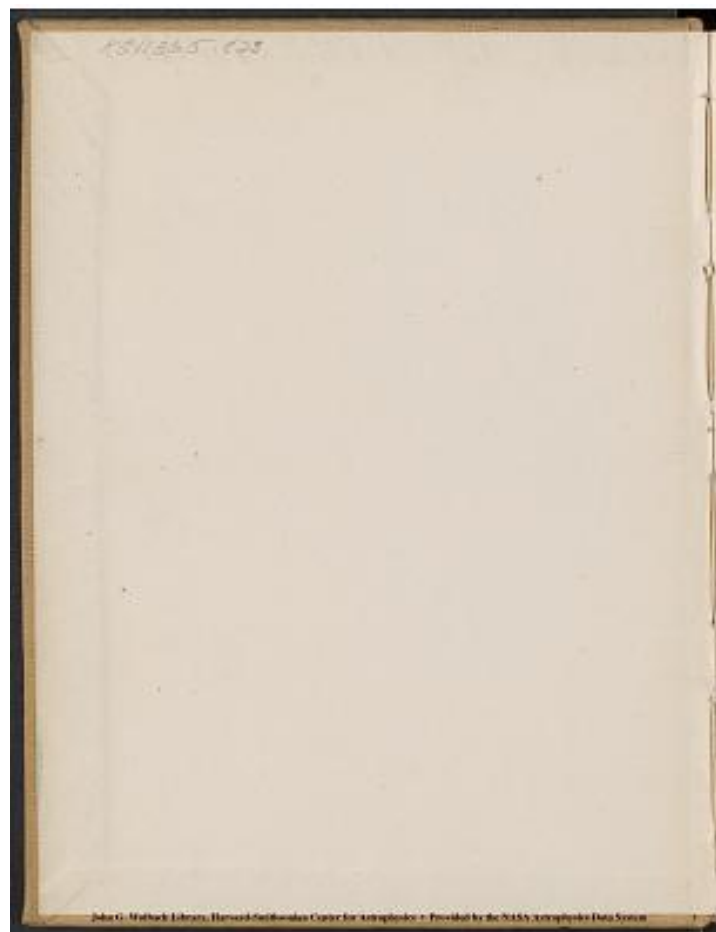
For more information on this project and related material, contact the Harvard-Smithsonian Center for Astrophysics. [See this project](#) and other collections in the Smithsonian Transcription Center.

[[front cover]]



Project PHaEDRA - Williamina P. Fleming - Clusters and Faint Stars #23
Transcribed and Reviewed by Digital Volunteers
Extracted Aug-29-2022 02:55:05

[[blank page]]



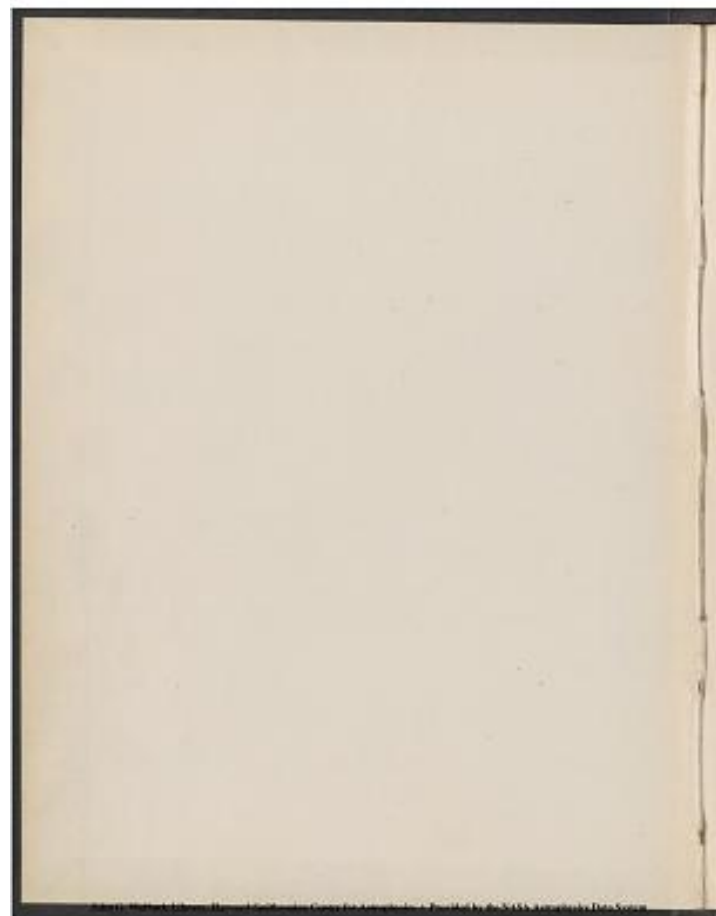
Project PHaEDRA - Williamina P. Fleming - Clusters and Faint Stars #23
Transcribed and Reviewed by Digital Volunteers
Extracted Aug-29-2022 02:55:05

[[blank page]]



Project PHaEDRA - Williamina P. Fleming - Clusters and Faint Stars #23
Transcribed and Reviewed by Digital Volunteers
Extracted Aug-29-2022 02:55:05

[[blank page]]



Project PHaEDRA - Williamina P. Fleming - Clusters and Faint Stars #23
Transcribed and Reviewed by Digital Volunteers
Extracted Aug-29-2022 02:55:05

[[blank page]]



Project PHaEDRA - Williamina P. Fleming - Clusters and Faint Stars #23
Transcribed and Reviewed by Digital Volunteers
Extracted Aug-29-2022 02:55:05

KG 11365, 823

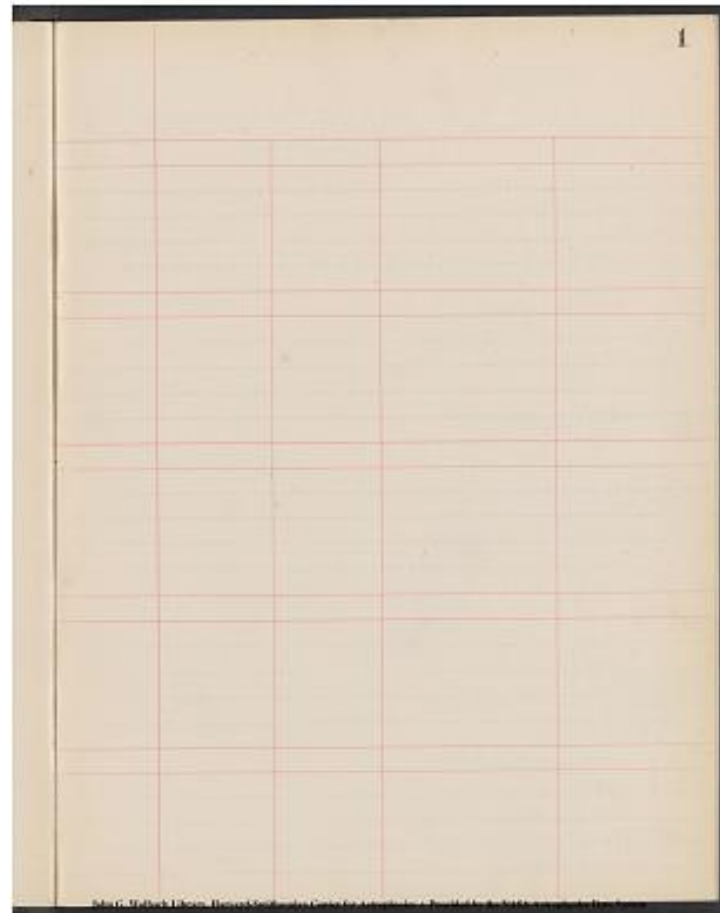
HARVARD UNIVERSITY LIBRARY
JUL 17 1956



Project PHaEDRA - Williamina P. Fleming - Clusters and Faint Stars #23
Transcribed and Reviewed by Digital Volunteers
Extracted Aug-29-2022 02:55:05

1

[[blank page]]



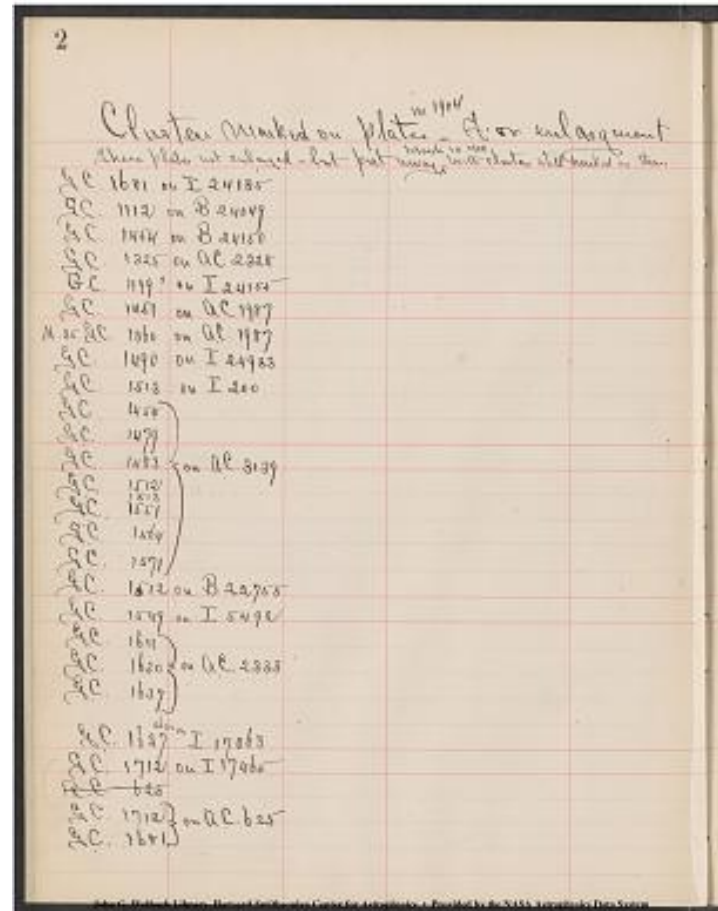
Project PHaEDRA - Williamina P. Fleming - Clusters and Faint Stars #23
Transcribed and Reviewed by Digital Volunteers
Extracted Aug-29-2022 02:55:05

Clusters marked on plate in 1904 - For enlargement
 These plates not enlarged but put away March 10 1908 with clusters still marked on them.

G.C. 1681 on I 24185
 G.C. 1112 on B 24049
 G.C. 1454 on B 24150
 G.C. 1325 on AC 2328
 G.C. 1199? on I 24155
 G.C. 1451 on AC 1987
 M.35 G.C. 1360 on AC 1987
 G.C. 1490 on I 24933
 G.C. 1513 on I 200
 G.C. 1454 on AC 3139
 G.C. 1479 on AC 3139
 G.C. 1483 on AC 3139
 G.C. 1512 on AC 3139
 1513 on AC 3139
 G.C. 1551 on AC 3139
 G.C. 1564 on AC 3139
 G.C. 1571 on AC 3139
 G.C. 1512 in B 22755
 G.C. 1549 on I 5492
 G.C. 1611 on AC 2333
 G.C. 1630 on AC 2333
 G.C. 1637 on AC 2333
 G.C. 1637 also on I 17063
 G.C. 1712 on I 17465
~~G.C. 625~~ ~~G.C. 625~~
 G.C. 1712 on AC 625
 G.C. 1681 on AC 625

[[footnote]]

John G. Wolbach Library, Harvard Smithsonian Center for Astrophysics
 - Provided by the NASA Astrophysics Data System



Project PHaEDRA - Williamina P. Fleming - Clusters and Faint Stars #23
 Transcribed and Reviewed by Digital Volunteers
 Extracted Aug-29-2022 02:55:05

R.A.	Dec.	Mag.	Name	Notes
17h 45m	+12° 15'	4.5	NGC 654	
17h 45m	+12° 15'	4.5	NGC 654	
17h 45m	+12° 15'	4.5	NGC 654	
17h 45m	+12° 15'	4.5	NGC 654	
17h 45m	+12° 15'	4.5	NGC 654	
17h 45m	+12° 15'	4.5	NGC 654	
17h 45m	+12° 15'	4.5	NGC 654	
17h 45m	+12° 15'	4.5	NGC 654	
17h 45m	+12° 15'	4.5	NGC 654	
17h 45m	+12° 15'	4.5	NGC 654	

Project PHaEDRA - Williamina P. Fleming - Clusters and Faint Stars #23
Transcribed and Reviewed by Digital Volunteers
Extracted Aug-29-2022 02:55:05

(For ft. stars see Bk. 18, p. 143.) February 9, 191 ~~0~~
~~1~~ - (Selected Jan. 12, 1911)

C2

[[7 columned table]]

7.3|1|+15°

450|7.3|~~4~~|~~6~~|A2|07|7.4|~~1~~|~~3~~

7.0|2|+15 447|7.32|A5|17|7.49|

6.5|3|+15 430|6.59|K|1.17|7.76|

7.8|4|+14 518|8.14|F|32|8.46|

7.5|5|+13 496|7.46|K|117|8.63|

8.0|6|+13 494|7.46|RK|---|8.63|

8.6|7|+14 511|9.00|RF|32|9.32|

8.5|8|+13 501|9.00|RF?|---|9.32|

8.0|9|+14 513|8.23|RK|117|9.40|

8.7|10|+14 516|9.42|RF5?|51|9.93|

9.0|11|+14 509|9.15|RK|117|10.32|

9.4|12|+14 507|9.89|RG?|71|10.60?|

9.3|13|+14 514|9.88|K?|117|11.05?|

9.5|14|+14 505|10.70|K?|---|11.05?|

9.5|15|+15 429|10.70|K?|---|11.05?|

9.5|16|+15 429|---|RK?|117|---|

9.5|17|+15 429|---|RK?|---|11.05?|

9.5|18|+14 510|10.70|RK?|---|11.05?|

9.5|19|+14 510|---|RK?|---|11.05?|

9.5|20|+14 510|---|RK?|---|11.05?|

John G. Wolbach Library, Harvard-Smithsonian Center for Astrophysics
 • Provided by the NASA Astrophysics Data System

February 9, 1910		Selected Jan. 12, 1911	
7.3	15 15 447	7.32	A5 17 7.49
6.5	15 15 430	6.59	K 1.17 7.76
7.8	14 518	8.14	F 32 8.46
7.5	13 496	7.46	K 117 8.63
8.0	13 494	7.46	RK --- 8.63
8.6	14 511	9.00	RF 32 9.32
8.5	13 501	9.00	RF? --- 9.32
8.0	14 513	8.23	RK 117 9.40
8.7	14 516	9.42	RF5? 51 9.93
9.0	14 509	9.15	RK 117 10.32
9.4	14 507	9.89	RG? 71 10.60?
9.3	14 514	9.88	K? 117 11.05?
9.5	14 505	10.70	K? --- 11.05?
9.5	15 429	10.70	K? --- 11.05?
9.5	16 429	---	RK? 117 ---
9.5	17 429	---	RK? --- 11.05?
9.5	18 510	10.70	RK? --- 11.05?
9.5	19 510	---	RK? --- 11.05?
9.5	20 510	---	RK? --- 11.05?

Project PHaEDRA - Williamina P. Fleming - Clusters and Faint Stars #23
 Transcribed and Reviewed by Digital Volunteers
 Extracted Aug-29-2022 02:55:05

(For ft. stars see Bk. 18, p 145.) (Selected Jan. 13, 1911.)

[[8 columned table]]

| C3|C3|Ptm.| | |Ptg.| |

1+14°|825|6.68|A2|07|6.75|7.2|

H.R.

2+15|~~732~~|713|6.70|F5|~~51~~
~~7.64~~|7.21|7.0|

3+14|804|6.72|G5|91|7.63|6.7|

4+15|735|7.~~74~~|~~80~~|A2|07|~~7.81~~
~~7.87~~|8.0|

5+1~~5~~|~~4~~|843|7.79|A1|04|7.83|7.9|

6+14|839|~~7.99~~|8.04|A1|04|8.0|~~8.4~~
~~8.4~~|

7+14|834|8.28|A0|00|8.28|8.4|

8+14|831|8.28|R|~~G5~~|~~K~~|117|8.28|7.6|

9+14|812|8.7|~~4~~|~~F~~|32|9.0|~~8.5~~
~~8.5~~|

10+14|836|7.84|RK|117|9.01|8.5|

11+14|832|8.02|RK|117|9.19|8.3|

12+14|813|8.8|~~4~~|~~2~~|G5|91|9.7|~~9.7~~
~~9.7~~|

13+15|733|8.82|F|32|9.73|9.0|

14+15|730|8.82|A|50|9.73|9.5|

15+14|816|9.58|G5|91|10.49|9.3|

16+14|822|9.64|G5|91|10.55|9.4|

* 17+14|828|9.46|K|117|10.63|9.2|

18+14|830|10.18|K|~~117~~|10.63|9.5|

19+14|830|10.18|K|10.63|9.5|

20+15|7.31|10.51|K|10.63|9.3|

21+15|7.31|10.51|K|10.63|9.3|

22+15|7.31|10.51|K|10.63|9.3|

23+15|7.31|10.51|K|10.63|9.3|

24+14|827|10.70|K|10.63|9.4|

*No 17 and fol. southern companion identify equally well with +14°828.

Perhaps they were combined in the DM.

W.P.F. April 17, 1911.

John G. Wolbach Library, Harvard-Smithsonian Center for Astrophysics.
 Provided by the NASA Astrophysics Data Systems

5

(For ft. stars see Bk. 18, p 145.) (Selected Jan. 13, 1911.)

	C3	Ptm.	Ptg.	
1 + 14°	825	6.68	A2	07 6.75
2 + 15	732	6.70	F5	51 7.21
3 + 14	804	6.72	G5	91 7.63
4 + 15	735	7.74	80	07 7.81
5 + 1	843	7.79	A1	04 7.83
6 + 14	839	7.99	8.04	A1 04 8.0
7 + 14	834	8.28	A0	00 8.28
8 + 14	831	8.28	R	117 8.28
9 + 14	812	8.7	4	F 32 9.0
10 + 14	836	7.84	RK	117 9.01
11 + 14	832	8.02	RK	117 9.19
12 + 14	813	8.8	4	2 G5 91 9.7
13 + 15	733	8.82	F	32 9.73
14 + 15	730	8.82	A	50 9.73
15 + 14	816	9.58	G5	91 10.49
16 + 14	822	9.64	G5	91 10.55
* 17 + 14	828	9.46	K	117 10.63
18 + 14	830	10.18	K	117 10.63
19 + 14	830	10.18	K	10.63
20 + 15	7.31	10.51	K	10.63
21 + 15	7.31	10.51	K	10.63
22 + 15	7.31	10.51	K	10.63
23 + 15	7.31	10.51	K	10.63
24 + 14	827	10.70	K	10.63

* No 17 and fol. southern companion identify equally well with +14°828. Perhaps they were combined in the DM.
 W.P.F. April 17, 1911.

Project PHaEDRA - Williamina P. Fleming - Clusters and Faint Stars #23
 Transcribed and Reviewed by Digital Volunteers
 Extracted Aug-29-2022 02:55:05

(For ft. stars see Bk. 18. p. 143) Marked on I 28387

[[7 columned table]]

||C5|C5|Ptm.|Sp.|corr.|Ptg.|

1|+15|2003|~~7.11~~|6.40|G|71|7.11|

2	+15	1981	7.78	6.40	F8	63	7.11
2	+12	2021	7.02	6.36	K1	17	7.02

[3]+13|2021|[[~~7.93~~]]6.76|K|117|7.93|

4	+13	2036	6.76	G5	91	7.93
5	+15	1062	[[atrial:athro:ach]]0			

5+15|1962|~~9.25~~8.54|G|71|9.25|

6	+14	2024	8.54	A	00	9.25
7	+14	2019	7.85	K	11	9.25

7	+14	2018	7.85	K	117	9.02
8	+15	1000	9.55	Strikethrough		

|8|+15|1969|9.|~~[46]~~~~[20]~~F~~[?]~~~~[/s~~
trikethrough]]32|9.52|

|9|+14|2025|8.94|K|117|10.11|

10+14	2022	9.28	G5 91	10.19
-------	------	------	-------	-------

11	+15	1976	9.44	G	71	10.15
----	-----	------	------	---	----	-------

12	+15	1971	9.84	G5	91	10.75
----	-----	------	------	----	----	-------

13	+15	1972	9.88	G5	91	10.79
----	-----	------	------	----	----	-------

14	+15	1974	9.47	K	117	10.64
----	-----	------	------	---	-----	-------

15	+14	2020	9.86	K	117	11.03
----	-----	------	------	---	-----	-------

16	+14	2020	A?	00	11.03
----	-----	------	----	----	-------

17	+15	1970	11.24	K?	117	12.41?
----	-----	------	-------	----	-----	--------

18	+15	1980	11.24	A?	00	11
----	-----	------	-------	----	----	----

19	+15	1980	11.24	A?		
----	-----	------	-------	----	--	--

20	+15	1980	11.24	A?		
----	-----	------	-------	----	--	--

John G. Wolbach Library, Harvard-Smithsonian Center for Astrophysics.
Provided by the NASA Astrophysics Data Systems

Exp. station.	Stk. (p. 100)	Stk.	Sp.	ms.	Qty.
1 + 15	2000	400	4	70	70
2 + 15	1981	398	5	20	-
3 + 15	2021	402	6	17	700
4 + 15	2026	402	6	90	-
5 + 15	1962	392	5	71	125
6 + 15	2024	402	6	20	-
7 + 15	2015	401	6	17	100
8 + 15	1949	389	5	22	850
9 + 15	2020	402	6	17	100
10 + 15	2022	402	6	91	100
11 + 15	1976	396	5	71	115
12 + 15	1971	391	5	91	100
13 + 15	1970	390	5	90	100
14 + 15	1974	394	5	17	100
15 + 15	2020	402	6	17	100
16	-	-	21	20	-
17 + 15	1970	390	5	17	100
18 + 15	1970	390	5	20	100
19	-	-	-	-	-
20	-	-	-	-	-

Project PHaEDRA - Williamina P. Fleming - Clusters and Faint Stars #23
Transcribed and Reviewed by Digital Volunteers
Extracted Aug-29-2022 02:55:05

b4]. Ptg. | |

1+14	1558	6.78	A0	6.78
2+15	1444	7.29	A2	7.36
3+15	1494	7.26	F2	7.66
4+15	1461	7.06	K	8.23
5+15	1447	7.06	A0	8.23
6+15	1445	7.71	K	8.88
7+14	1545	8.08	K	9.25
8+15	1443	9.28	A	9.28
9+15	1459	8.71	K	9.88
10+15	1457	9.78	K	10.95
11+15	1440	9.78	A	10.95
12+15	1458	9.56	G5	10.47
13+15	1556	9.46	G5	10.37
14+15	1464	10.67	K?	11.84?
15+15	1464	a?		00
16+15	1464	a?		00

7

12.14		12.29	
1 +14	1558	6.78	A0 6.78 00
2 +15	1444	7.29	A2 7.36 07
3 +15	1494	7.26	F2 7.66 40
4 +15	1461	7.06	K 8.23 17
5 +15	1447	-	A0 - 00
6 +15	1445	7.71	K 8.88 17
7 +14	1545	8.08	K 9.25 17
8 +15	1443	9.28	A 9.28 00
9 +15	1459	8.71	K 9.88 17
10 +15	1457	9.78	K 10.95 17
11 +15	1440	9.78	A 10.95 00
12 +15	1458	9.56	G5 10.47 91
13 +15	1556	9.46	G5 10.37 91
14 +15	1464	10.67	K? 11.84? 117
15 +15	1464	a?	00
16 +15	1464	a?	00

Project PHaEDRA - Williamina P. Fleming - Clusters and Faint Stars #23
 Transcribed and Reviewed by Digital Volunteers
 Extracted Aug-29-2022 02:55:05

(For ft. stars see Bk. 18 p.144.) marked on I 28209

[[8 columned table]]

		C6	C6	Ptm	Sp.	corr.	Ptg.
6.5	1	+13°	2348	6.70	A	00	6.70
6.5	2	+12	2284	6.42	F5	51	6.93
7.0	3	+16	2224	7.38	F5	51	7.89
7.0	4	+14	2345	7.44	G	71	8.15
7.8	5	+13	2350	7.44	F	32	..
7.5	6	+14	234	[[strikethrough]]	6	[[strikethrough]]	4
8.5	7	+15	2302	8.54	F5	51	9.05
7.5	8	+13	2358	7.62	G5	91	8.53
8.0	9	+15	2283	8.07	G5	91	8.98
7.5	10	+15	2290	7.58	K	117	8.75
9.1	11	+14	2338	..	A	00	..
8.1	12	+15	2282	8.51	K	117	9.86
8.8	13	+15	2288	9.26	K	117	10.43
9.3	14	+15	2281	9.82	G	71	1053
8.9	15	+15	2289	..	K	117	..
9.5	16	+1	[[strikethrough]]	5	[[strikethrough]]	4	2337
[[strikethrough]]	[[strikethrough]]	[[strikethrough]]	71	11.17	[[strikethrough]]	[[strikethrough]]	[[strikethrough]]
9.5	17	+15	2286	..	F?	32	..
18	F?	32	..
9.5	19	+15	2284	..	G	71	..
9.5	20	+15	2285	11.33	Ma?	168	13.01?
9.5	21	+15	2287	11.20	K?	117	12.37?
22	C
23
24
25
26	a

John G. Wolbach Library, Harvard-Smithsonian Center for Astrophysics
 • Provided by the NASA Astrophysics Data System

Project PHaEDRA - Williamina P. Fleming - Clusters and Faint Stars #23
 Transcribed and Reviewed by Digital Volunteers
 Extracted Aug-29-2022 02:55:05

[[7 columned table]]

| C7|C7|Ptm|Sp.|corr.|Ptg.|

|-----|-----|-----|-----|-----|-----|

1+17°|2573|6.01|K|117|7.18|

2+16|2476|7.42|F|32|7.74|

3+14|2|~~8~~|~~585~~|7.89|F|32|8.21|4+15|2541|~~7.73~~|~~8.18~~|~~8.38~~|F5|51|8.89|

5+16|2466|8.38|

6+15|2542|8.4|~~8.40~~|~~8.69~~|G?|71|~~8.40~~|~~9.19~~|

7+16|2459|8.69|

8+16|2461|8.69|

9+15|2523|8.69|

10+16|2448|8.69|

11+15|2535|9.22|

12+15|2545|10.06|

13+15|2538|10.06|

14+15|2537|10.60|

15+15|2543|11.01|

16+15|2536|11.01|

17+15|2536|

18+15|2536|

John G. Wolbach Library, Harvard-Smithsonian Center for Astrophysics.
 Provided by the NASA Astrophysics Data Systems

1+17	2573	6.01	K	117	7.18	
2+16	2476	7.42	F	32	7.74	
3+14	2	8	585	7.89	F 32 8.21	
4+15	2541	7.73	8.18	8.38	F5 51 8.89	
5+16	2466	8.38				
6+15	2542	8.4	8.40	8.69	G? 71 8.40	9.19
7+16	2459	8.69				
8+16	2461	8.69				
9+15	2523	8.69				
10+16	2448	8.69				
11+15	2535	9.22				
12+15	2545	10.06				
13+15	2538	10.06				
14+15	2537	10.60				
15+15	2543	11.01				
16+15	2536	11.01				
17+15	2536					
18+15	2536					

Project PHaEDRA - Williamina P. Fleming - Clusters and Faint Stars #23
 Transcribed and Reviewed by Digital Volunteers
 Extracted Aug-29-2022 02:55:05

(For ft. stars see Bk. 18, 144)

[[right margin]]

Marked on I 28~~[[strikethrough]]~~8~~[[strikethrough]]~~551

[[/right margin]]

[[7 columned table]]

| C8|C8|Ptm|Sp.|corr.|Ptg|

-----|-----|-----|-----|

1|+16°|2725|6.99|G|71|7.70|

2|+13|2899|7.16|A|0|7.16|

3|+15|2808|7.98|~~G~~~~[[strikethrough]]~~A8|26|8.24|

4|+15|2792|7.01|G|71|7.72|

5|+14|2812|6.77|K|117|7.94|

6|+15|2803|7.1~~[[strikethrough]]~~9~~[[strikethrough]]~~1|G5|91|~~[[strikethrough]]~~

8.10~~[[strikethrough]]~~8.02|

7|+14|2850|8.46|F5|51|8.97|

8|+14|2828|7.76|K|17|8.93|

9|+14|2823|8.14|G5|91|9.05|

10|+15|2810|9.16|F8|63|9.79|

11|+14|2824|9.18|F|32|9.50|

12|+15|2814|8.72|G5|91|9.63|

13|+15|2~~[[strikethrough]]~~7~~[[strikethrough]]~~807|8.80|K|117|9.97|

14|+14|2839|9.57|F|32|9.89|

15|+15|2816|9.83|F|32|10.15|

16|+14|2835|10.25|F?|32|10.57?|

17|+15|2818|9.48|K|117|10.65|

18|+15|2818| |F?|32| |

19|+15|2809|10.10|G?|71|10.81?|

20|+14|2827|10.10|G5?|91|10.81?|

21|+14|2827|10.10|G5?|91|10.81?|

22|+14|2827|10.10|A?|00| |

23|+14|2827|10.10|A?| | |

John G. Wolbach Library, Harvard-Smithsonian Center for Astrophysics.
Provided by the NASA Astrophysics Data Systems

10

(For ft. stars see Bk. 18, 144)

Marked on I 28~~[[strikethrough]]~~8~~[[strikethrough]]~~551

[[7 columned table]]

	Dec	RA	Sp.	corr.	Ptg.
1	+16°	2725	6.99	G	71 7.70
2	+13	2899	7.16	A	0 7.16
3	+15	2808	7.98	G	26 8.24
4	+15	2792	7.01	G	71 7.72
5	+14	2812	6.77	K	117 7.94
6	+15	2803	7.1	G	91 8.02
7	+14	2850	8.46	F5	51 8.97
8	+14	2828	7.76	K	17 8.93
9	+14	2823	8.14	G5	91 9.05
10	+15	2810	9.16	F8	63 9.79
11	+14	2824	9.18	F	32 9.50
12	+15	2814	8.72	G5	91 9.63
13	+15	2 [[strikethrough]] 7 [[strikethrough]] 807	8.80	K	117 9.97
14	+14	2839	9.57	F	32 9.89
15	+15	2816	9.83	F	32 10.15
16	+14	2835	10.25	F?	32 10.57?
17	+15	2818	9.48	K	117 10.65
18	+15	2818		F?	32
19	+15	2809	10.10	G?	71 10.81?
20	+14	2827	10.10	G5?	91 10.81?
21	+14	2827	10.10	G5?	91 10.81?
22	+14	2827	10.10	A?	00
23	+14	2827	10.10	A?	

John G. Wolbach Library, Harvard-Smithsonian Center for Astrophysics. Provided by the NASA Astrophysics Data Systems

Project PHaEDRA - Williamina P. Fleming - Clusters and Faint Stars #23
Transcribed and Reviewed by Digital Volunteers
Extracted Aug-29-2022 02:55:05

(For ft. stars see Bk. 18. p. 145)

C9

[[4 columned table]]

1+16°3083|A|
 2+15|3089|F2|
 3+14|3180|K|
 4+15|3108|G5|
 5+15|3116|G|
 6+15|3090|G5|
 7+14|3178|K|
 8+15|3096|K|
 9+15|3104|G|~~5~~?~~5~~||
 10+15|3109|G5|
 11+15|3106|K|
 12+14|3183|G5|
 13+15|3107|G5|
 14+1|~~5~~||~~4~~|3187|G5|
 15|..|G5|
 16a|..|
 17|..|
 18b|..|
~~19~~||
~~20~~||

John G. Wolbach Library, Harvard-Smithsonian Center for Astrophysics.
 Provided by the NASA Astrophysics Data Systems

11

Or ft. stars see Bk. 18. p. 145

C9

1	+16°	3083	A
2	+15	3089	F2
3	+14	3180	K
4	+15	3108	G5
5	+15	3116	G
6	+15	3090	G5
7	+14	3178	K
8	+15	3096	K
9	+15	3104	G
10	+15	3109	G5
11	+15	3106	K
12	+14	3183	G5
13	+15	3107	G5
14	+1	5	4 3187 G5
15	..	G5	
16a	..		
17	..		
18b	..		
19			
20			

Project PHaEDRA - Williamina P. Fleming - Clusters and Faint Stars #23
 Transcribed and Reviewed by Digital Volunteers
 Extracted Aug-29-2022 02:55:05

12

[6 columned table]

---||b10||Ptm||Sp.||Eor.||Ptg|
 1||+15° 3683||6.84||a||00||6.84|
 2||+15 3690||7.34||A4||14||7.38|
 3||+14 3755||6.80||K||117||7.97|
 4||+14 3745||..||A||00||..|
 5||+14 3744||..||Y5||91||..|
 6||+14 3768||8.48||F5||51||8.99|
 7||+14 3771||749||K||117||8.66|
 8||+15 3681||9.07||A0||00||9.07|
 9||+14 3790||..||K||117||..|
 10||+14 3782||9.15||~~Y5?~~||a||00||9.15|
 11||+14 3772||9.69||A?||00||9.69?|
 12||+14 3776||10.06||..||..||..|
 13||+14 3775||10.36||..||..||..|
 14||+15 3680||10.96||..||..||..|
 15||+15||3676||11.04||..||..||..|
 16||+15||3677||..||..||..||..|
 17||..||..||..||..||..||..|
 18||..||..||..||..||..||..|
 19||..||..||..||..||..||..|
 20||..||..||..||..||..||..|

John G. Wolbach Library, Harvard-Smithsonian Center for Astrophysics
 • Provided by the NASA Astrophysics Data System

12					
	α	δ	μ	σ	ρ
1	+15° 3683	6.84	A	00	6.84
2	+15 3690	7.34	A4	14	7.38
3	+14 3755	6.80	K	117	7.97
4	+14 3745	..	A	00	..
5	+14 3744	..	Y5	91	..
6	+14 3768	8.48	F5	51	8.99
7	+14 3771	749	K	117	8.66
8	+15 3681	9.07	A0	00	9.07
9	+14 3790	..	K	117	..
10	+14 3782	9.15	Y5?	a	00
11	+14 3772	9.69	A?	00	9.69?
12	+14 3776	10.06
13	+14 3775	10.36
14	+15 3680	10.96
15	+15	3676	11.04
16	+15	3677
17
18
19
20

Project PHaEDRA - Williamina P. Fleming - Clusters and Faint Stars #23
 Transcribed and Reviewed by Digital Volunteers
 Extracted Aug-29-2022 02:55:05

13

(for ft. stars see BR. 18 j. 146)

[5 columned table]

---||b 11||Ptm.||Sp.||Ptg|

1||+14 4530||6.62||F5||7.13|

2||+15 4340||6.52||K5||7.95|

3||+13||4607||..||A||..|

4||+14||4518||6.38||K5||7.81|

5||+15||4320||7.73||g2||8.52|

6||+14||4537||8.38||F2||8.78|

7||+15||4325||9.16||A5||9.33|

8||+14||4520||9.25||A||9.35|

9||+14||4516||9.18||F5?||9.69?|

10||+14||4528||9.58||A||9.58|

11||+14||4519||..||A||..|

12||+14||4531||9.14||K||10.31|

13||+14||4531||9.14||K||10.31|

13||+14||4522||8.88||K||10.05|

14||+15||4331||8.97||K||10.14|

15||---||..||---||F?||---|

16||+14||4533||10.48||K?||11.65?|

17||+15||4322||..||A?||..|

18||+14||4523||10.41||A?||10.41?|

19||a||..||---||A?||..|

20||..||..||---||..||..|

21||..||..||..||..||..|

22||..||..||..||..||..|

John G. Wolbach Library, Harvard-Smithsonian Center for Astrophysics

• Provided by the NASA Astrophysics Data System

13

(For ft. stars see BR. 18 j. 146)

	b 11	Ptm.	Sp.	Ptg.
1	+14	4530	6.62	F5 7.13
2	+15	4340	6.52	K5 7.95
3	+13	4607	..	A ..
4	+14	4518	6.38	K5 7.81
5	+15	4320	7.73	g2 8.52
6	+14	4537	8.38	F2 8.78
7	+15	4325	9.16	A5 9.33
8	+14	4520	9.25	A 9.35
9	+14	4516	9.18	F5? 9.69?
10	+14	4528	9.58	A 9.58
11	+14	4519	..	A ..
12	+14	4531	9.14	K 10.31
13	+14	4531	9.14	K 10.31
13	+14	4522	8.88	K 10.05
14	+15	4331	8.97	K 10.14
15	---	..	---	F? ---
16	+14	4533	10.48	K? 11.65?
17	+15	4322	..	A? ..
18	+14	4523	10.41	A? 10.41?
19	a	..	---	A? ..
20	---
21
22

John G. Wolbach Library, Harvard-Smithsonian Center for Astrophysics

Project PHaEDRA - Williamina P. Fleming - Clusters and Faint Stars #23
 Transcribed and Reviewed by Digital Volunteers
 Extracted Aug-29-2022 02:55:05

14

(For ft. stars see Bk.18.p.146)
[[6 columned table]]

	C12	Ptm.	Sp.	car.	Ptg.
1	+14 4929	6.82	A	00	6.82
2	+13 5059		G		
3	+15 4752		A5		
4	+15 4751	6.74	K		7.91
5	+14 4916	7.20	K		8.37
6	+15 4748		A		
7	+14 4902		A		
8	+14 4894		A		
9	+15 4764		J		
10	+14 4912	8.08	K		9.25
11	+15 4750	9.06	F5		9.57
12	+15 4753	8.53	K		9.70
13	+14 4924	9.73	F?		10.05?
14	+15 4756	9.28	G5		10.19
15	+15 4761		K		
16	+14 4932	10.44	K		11.61
17	+15 4755	9.61	K		10.78
18	+14 4925	9.45	A?		9.45
19					
20					

14

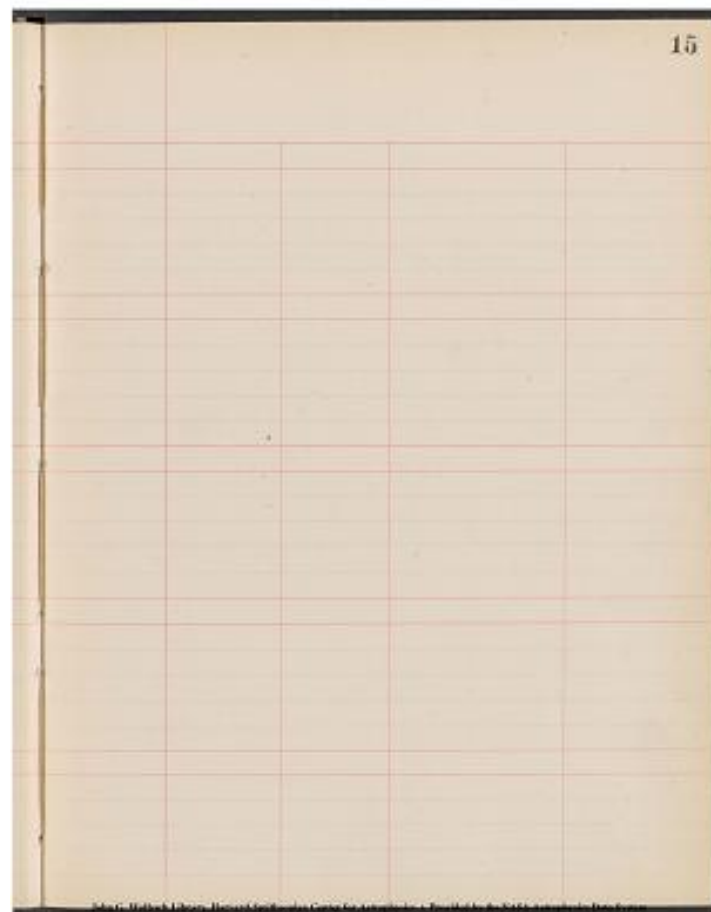
(For ft. stars see Bk.18.p.146)

	C12	Ptm.	Sp.	car.	Ptg.
1	+14 4929	6.82	A	00	6.82
2	+13 5059		G		
3	+15 4752		A5		
4	+15 4751	6.74	K		7.91
5	+14 4916	7.20	K		8.37
6	+15 4748		A		
7	+14 4902		A		
8	+14 4894		A		
9	+15 4764		J		
10	+14 4912	8.08	K		9.25
11	+15 4750	9.06	F5		9.57
12	+15 4753	8.53	K		9.70
13	+14 4924	9.73	F?		10.05?
14	+15 4756	9.28	G5		10.19
15	+15 4761		K		
16	+14 4932	10.44	K		11.61
17	+15 4755	9.61	K		10.78
18	+14 4925	9.45	A?		9.45
19					
20					

Project PHaEDRA - Williamina P. Fleming - Clusters and Faint Stars #23
Transcribed and Reviewed by Digital Volunteers
Extracted Aug-29-2022 02:55:05

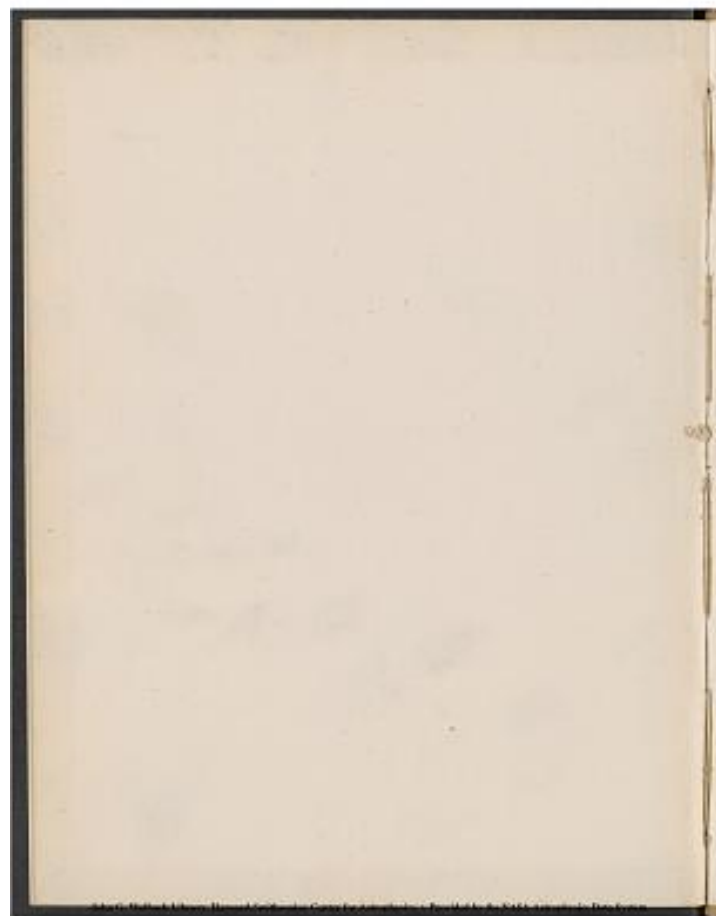
15

[[blank page]]



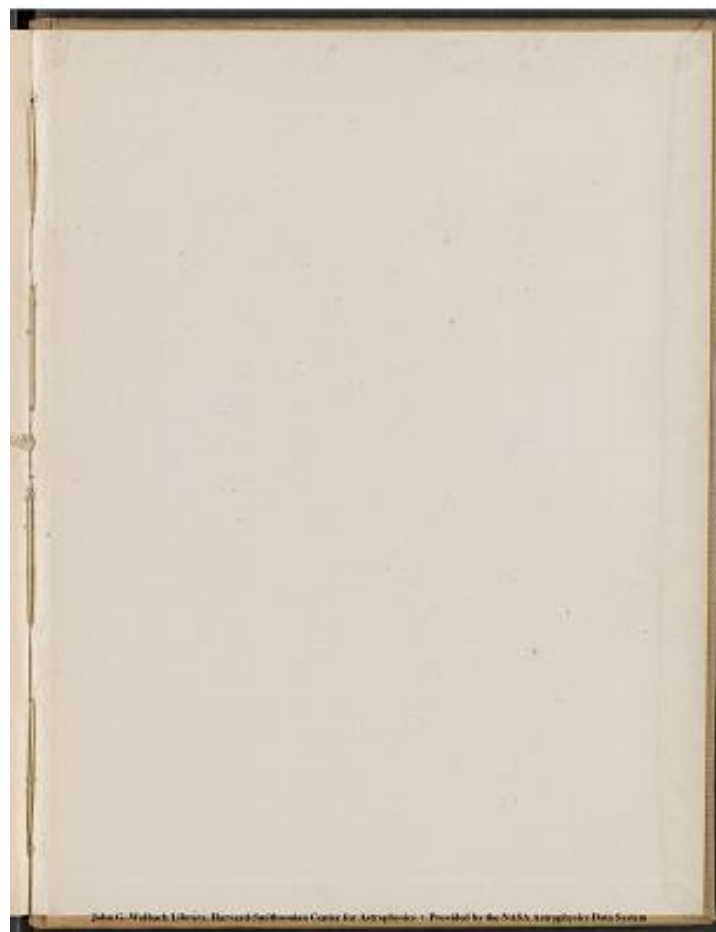
Project PHaEDRA - Williamina P. Fleming - Clusters and Faint Stars #23
Transcribed and Reviewed by Digital Volunteers
Extracted Aug-29-2022 02:55:05

[[blank page]]



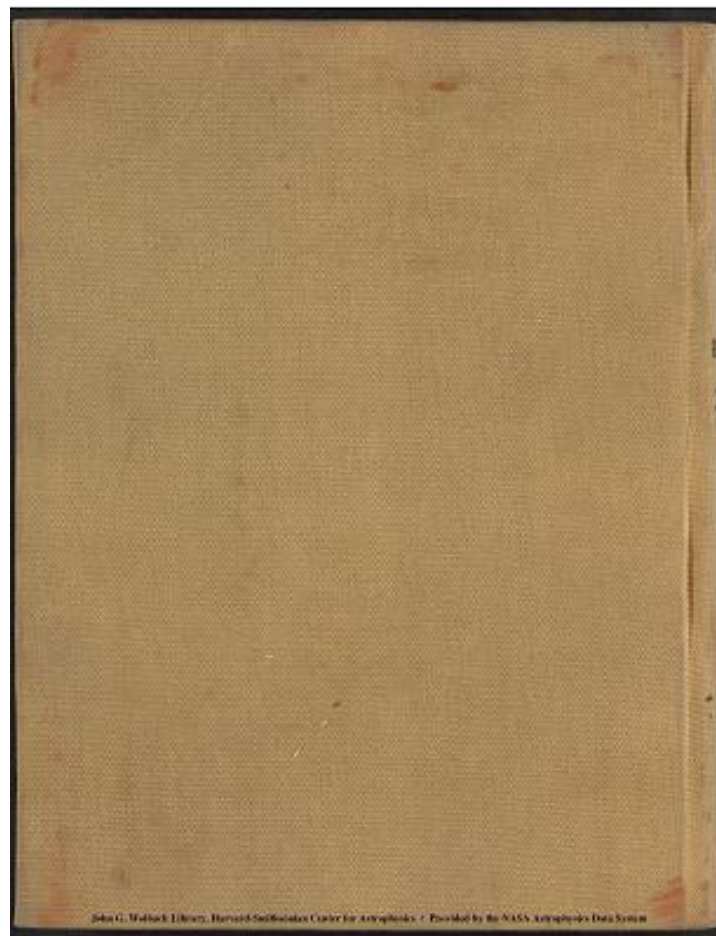
Project PHaEDRA - Williamina P. Fleming - Clusters and Faint Stars #23
Transcribed and Reviewed by Digital Volunteers
Extracted Aug-29-2022 02:55:05

[[blank page]]



Project PHaEDRA - Williamina P. Fleming - Clusters and Faint Stars #23
Transcribed and Reviewed by Digital Volunteers
Extracted Aug-29-2022 02:55:05

[[back cover]]



Project PHaEDRA - Williamina P. Fleming - Clusters and Faint Stars #23
Transcribed and Reviewed by Digital Volunteers
Extracted Aug-29-2022 02:55:05



Smithsonian Institution

Harvard-Smithsonian Center for Astrophysics

The mission of the Smithsonian is the increase and diffusion of knowledge - shaping the future by preserving our heritage, discovering new knowledge, and sharing our resources with the world. Founded in 1846, the Smithsonian is the world's largest museum and research complex, consisting of 19 museums and galleries, the National Zoological Park, and nine research facilities. Become an active part of our mission through the Transcription Center. Together, we are discovering secrets hidden deep inside our collections that illuminate our history and our world.

Join us!

The Transcription Center: <https://transcription.si.edu>

On Facebook: <https://www.facebook.com/SmithsonianTranscriptionCenter>

On Twitter: [@TranscribeSI](https://twitter.com/TranscribeSI)

Connect with the Smithsonian

Smithsonian Institution: www.si.edu

On Facebook: <https://www.facebook.com/Smithsonian>

On Twitter: [@smithsonian](https://twitter.com/smithsonian)