



**Smithsonian Institution**

*Harvard-Smithsonian Center for Astrophysics*

## **Project PHaEDRA - Williamina P. Fleming - Notes on Draper Catalog; Accounts of Share-Holders of the Camera #[15]**

Extracted on Dec-02-2022 11:13:25

**The Smithsonian Institution thanks all digital volunteers that transcribed and reviewed this material. Your work enriches Smithsonian collections, making them available to anyone with an interest in using them.**

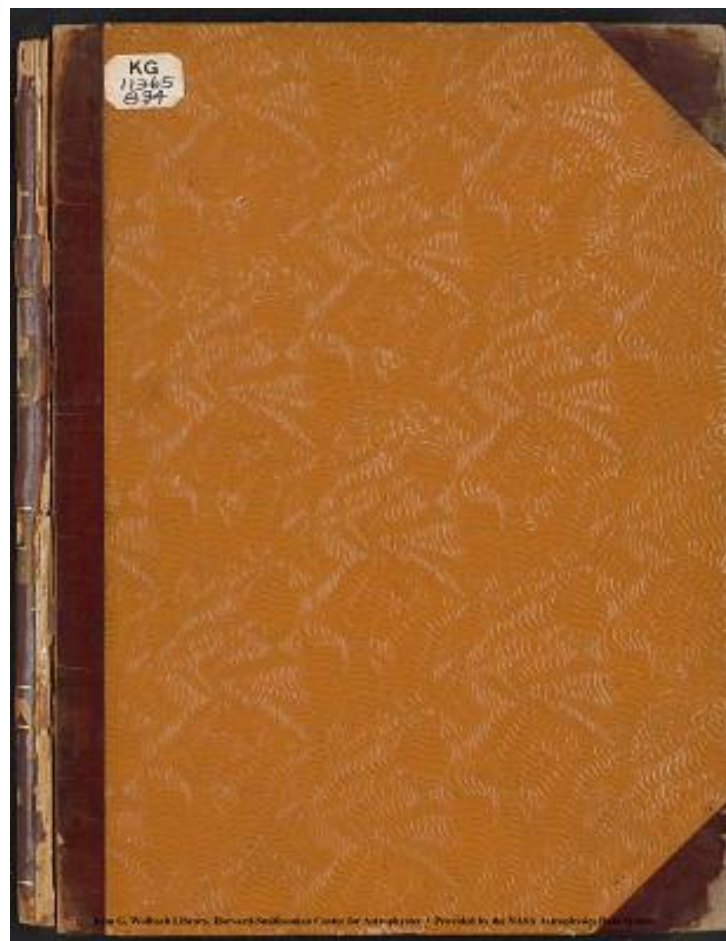
The Smithsonian Institution (the "Smithsonian") provides the content on this website ([transcription.si.edu](https://transcription.si.edu)), other Smithsonian websites, and third-party sites on which it maintains a presence ("SI Websites") in support of its mission for the "increase and diffusion of knowledge." The Smithsonian invites visitors to use its online content for personal, educational and other non-commercial purposes. By using this website, you accept and agree to abide by the [following terms](#).

- If sharing the material in personal and educational contexts, please cite the Harvard-Smithsonian Center for Astrophysics as source of the content and the project title as provided at the top of the document. Include the accession number or collection name; when possible, link to the Harvard-Smithsonian Center for Astrophysics website.
- If you wish to use this material in a for-profit publication, exhibition, or online project, please contact Harvard-Smithsonian Center for Astrophysics or [transcribe@si.edu](mailto:transcribe@si.edu)

For more information on this project and related material, contact the Harvard-Smithsonian Center for Astrophysics. [See this project](#) and other collections in the Smithsonian Transcription Center.

[[cover page]]

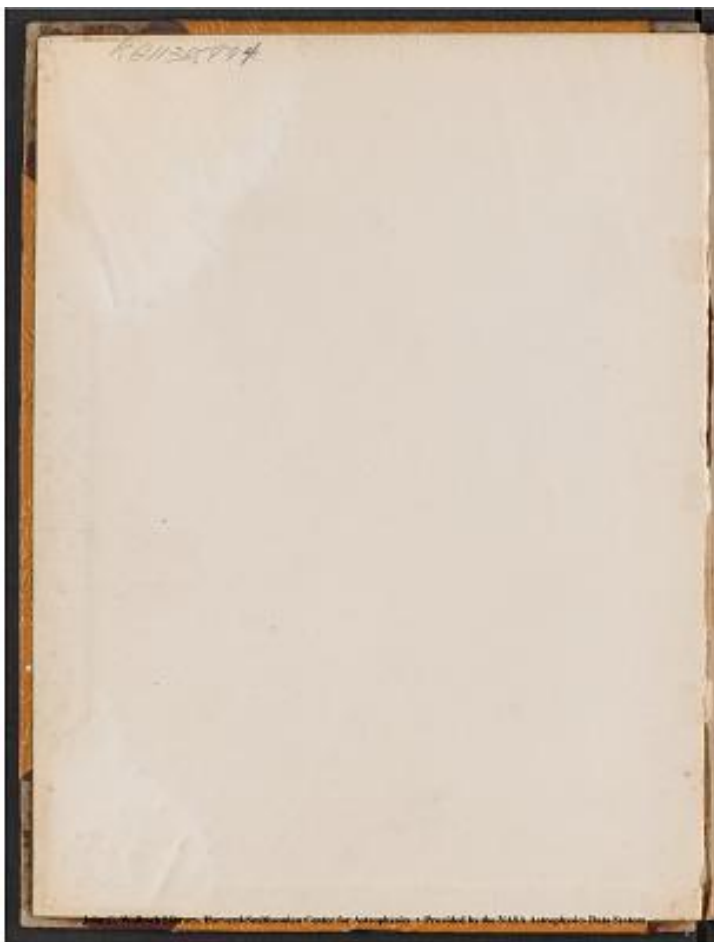
KG  
11365  
894



Project PHaEDRA - Williamina P. Fleming - Notes on Draper Catalog;  
Accounts of Share-Holders of the Camera #[15]  
Transcribed and Reviewed by Digital Volunteers  
Extracted Dec-02-2022 11:13:25

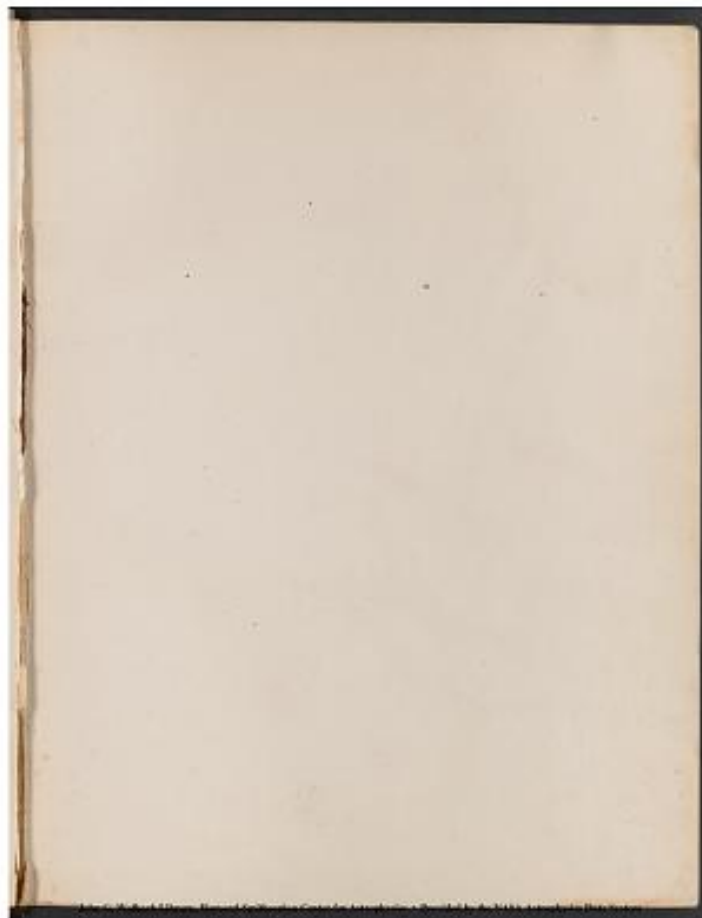
KG11365,894

John G. Wolbach Library, Harvard-Smithsonian Center for Astrophysics  
. Provided by the NASA Astrophysics Data System



Project PHaEDRA - Williamina P. Fleming - Notes on Draper Catalog;  
Accounts of Share-Holders of the Camera #15]  
Transcribed and Reviewed by Digital Volunteers  
Extracted Dec-02-2022 11:13:25

[[blank page]]



Project PHaEDRA - Williamina P. Fleming - Notes on Draper Catalog;  
Accounts of Share-Holders of the Camera #15]  
Transcribed and Reviewed by Digital Volunteers  
Extracted Dec-02-2022 11:13:25

KG 17365.894

[[stamped]]  
HARVARD  
UNIVERSITY  
LIBRARY  
JUL 17 1956  
[[/stamped]]



Project PHaEDRA - Williamina P. Fleming - Notes on Draper Catalog;  
Accounts of Share-Holders of the Camera #[15]  
Transcribed and Reviewed by Digital Volunteers  
Extracted Dec-02-2022 11:13:25

[[blank page]]



Project PHaEDRA - Williamina P. Fleming - Notes on Draper Catalog;  
Accounts of Share-Holders of the Camera #15]  
Transcribed and Reviewed by Digital Volunteers  
Extracted Dec-02-2022 11:13:25

[[blank page]]

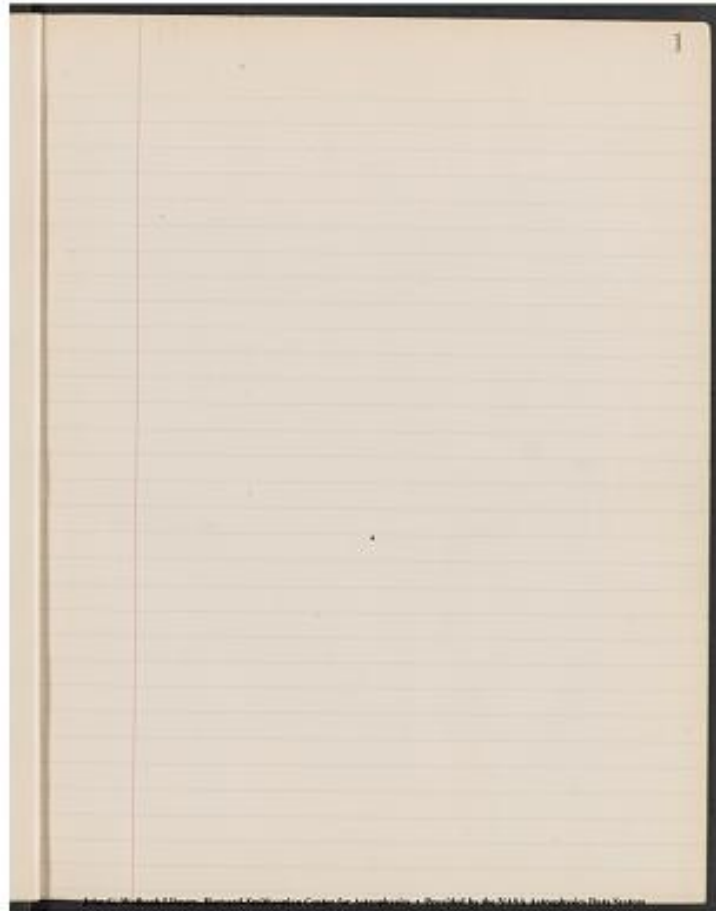




Project PHaEDRA - Williamina P. Fleming - Notes on Draper Catalog;  
Accounts of Share-Holders of the Camera #[15]  
Transcribed and Reviewed by Digital Volunteers  
Extracted Dec-02-2022 11:13:25

1

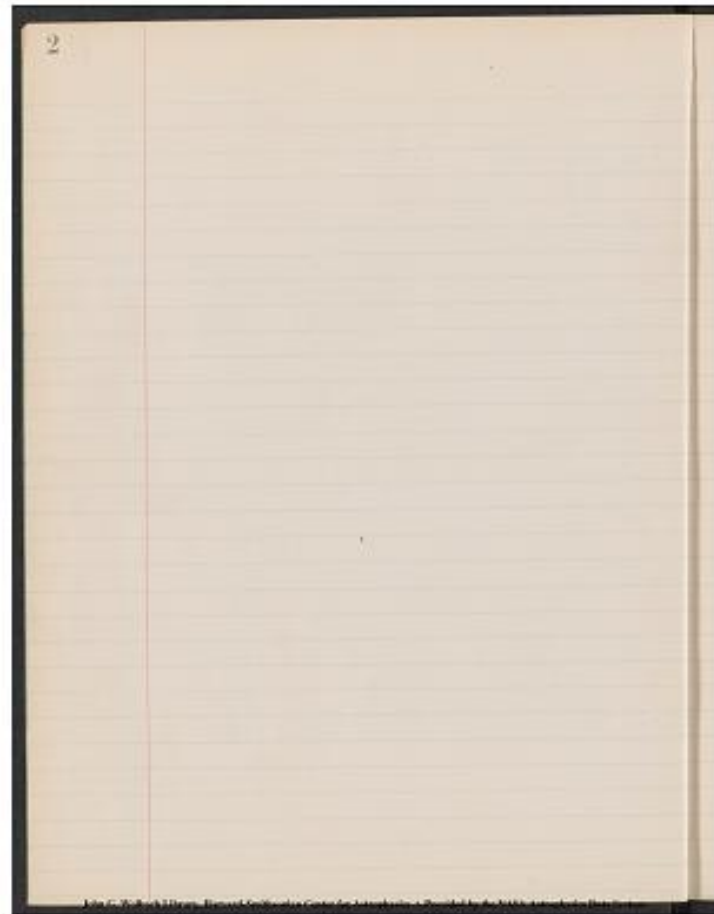
[[no input]]



Project PHaEDRA - Williamina P. Fleming - Notes on Draper Catalog;  
Accounts of Share-Holders of the Camera #15]  
Transcribed and Reviewed by Digital Volunteers  
Extracted Dec-02-2022 11:13:25

2

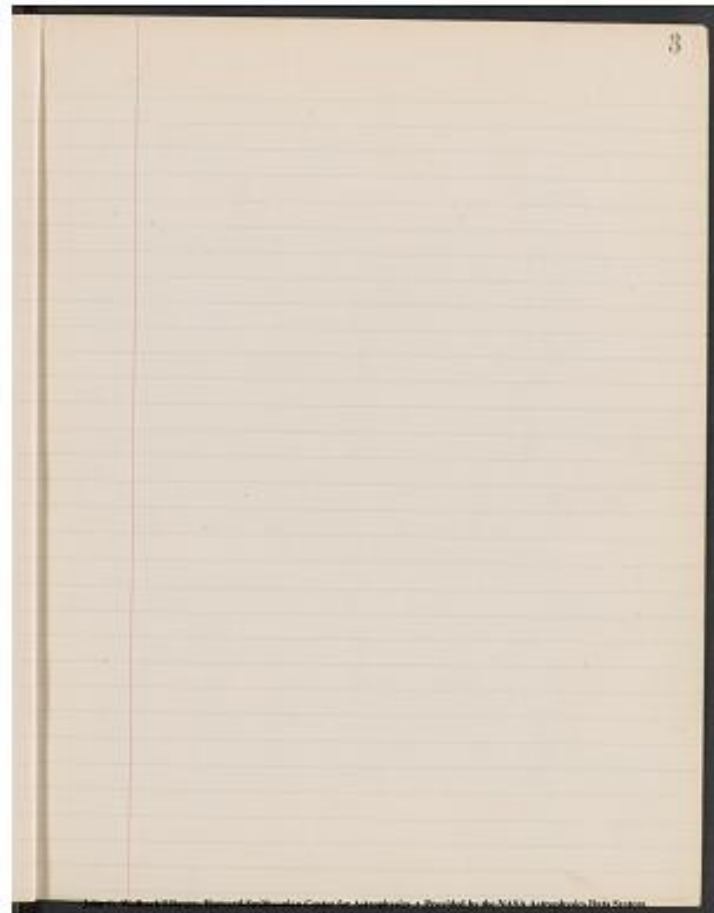
[[no input]]



Project PHaEDRA - Williamina P. Fleming - Notes on Draper Catalog;  
Accounts of Share-Holders of the Camera #[15]  
Transcribed and Reviewed by Digital Volunteers  
Extracted Dec-02-2022 11:13:25

3

[[no input]]



Project PHaEDRA - Williamina P. Fleming - Notes on Draper Catalog;  
Accounts of Share-Holders of the Camera #15]  
Transcribed and Reviewed by Digital Volunteers  
Extracted Dec-02-2022 11:13:25

Various Notes with regard to Description of W.C.

Measure additional large residual of standard stars on E.F. & G. Halls  
[[?]]

Write remark on Constants for Plates [[178, 314, 500, 715, 823 and  
613]]

Examine additional groupings of Residuals of standard stars.

Look up spectra measured on E, F, and G plates for which no  
identification was found. Estimate position and outer [[?]] in remark on  
plates. These remarks will follow the table of Rates.

Look up all D G H and L stars in D.G. and write remark according to  
conclusion [[?]] from examination of photographs taken with the 11 inch  
telescope

Change [[?], R, Cass. and other variables [[?]] having the same spectrum,  
to class M.

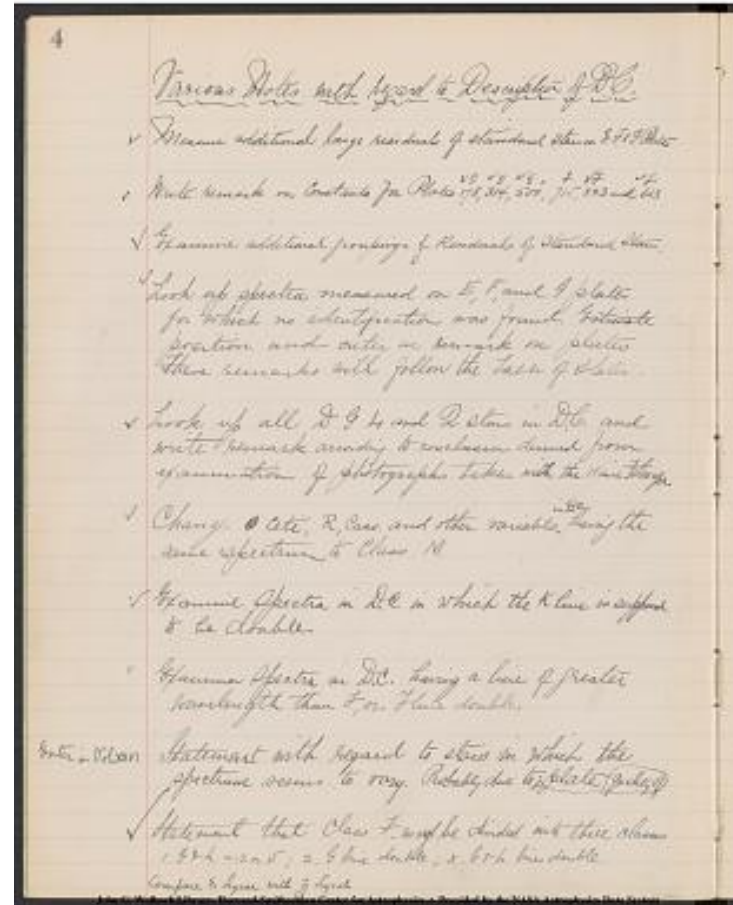
[[?]] [[Opectra?]] in D.C. in which the K line is supposed to be double

[[?]] [[Opectra?]] in D.C. having a line of greater wavelength than [[?]],  
or [[?]] live double.

[[?]] in Vol XXVI

Statement with regard to [[?]] in which the spectrum seems to vary.  
Probably due to quality of plate.

Statement that Class 7 maybe decided [[?]] three classes  
1. G + H = .2 pi.(sqrt) ; 2 G line double ; 3 . G & H lines double.  
Compare & Lyrae with [[?]] Ly[[?]]al



Project PHaEDRA - Williamina P. Fleming - Notes on Draper Catalog;  
Accounts of Share-Holders of the Camera #15]  
Transcribed and Reviewed by Digital Volunteers  
Extracted Dec-02-2022 11:13:25

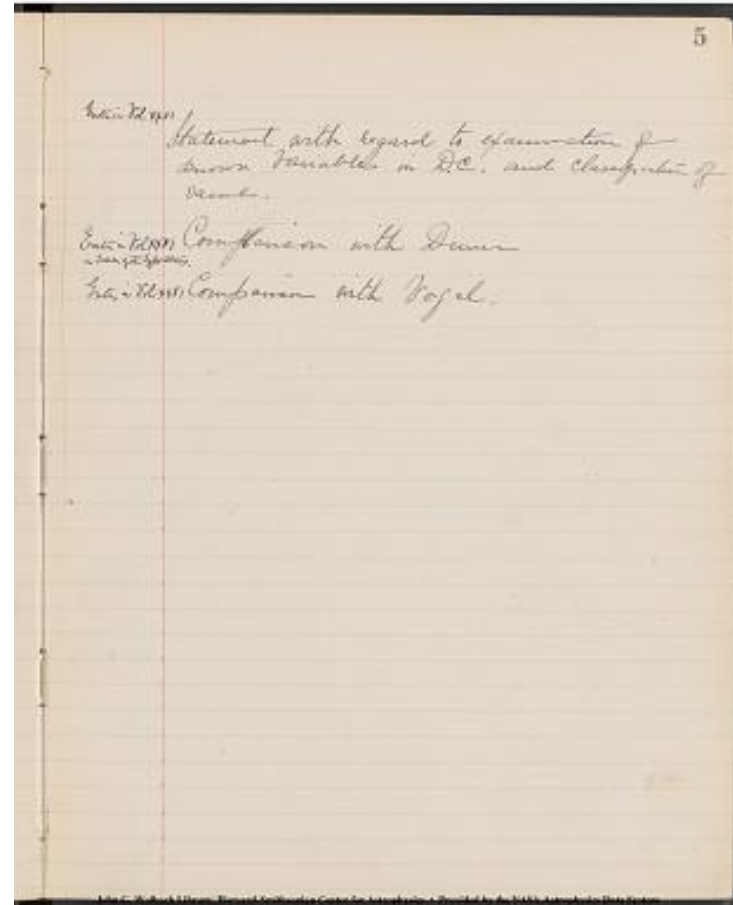
5

Enter in Vol XXVI

Statement with regard to examination of known variables in D.C. and classification of Dame.

Enter in Vol XXVI Comparison with Duren  
in layer of II Type Stars.

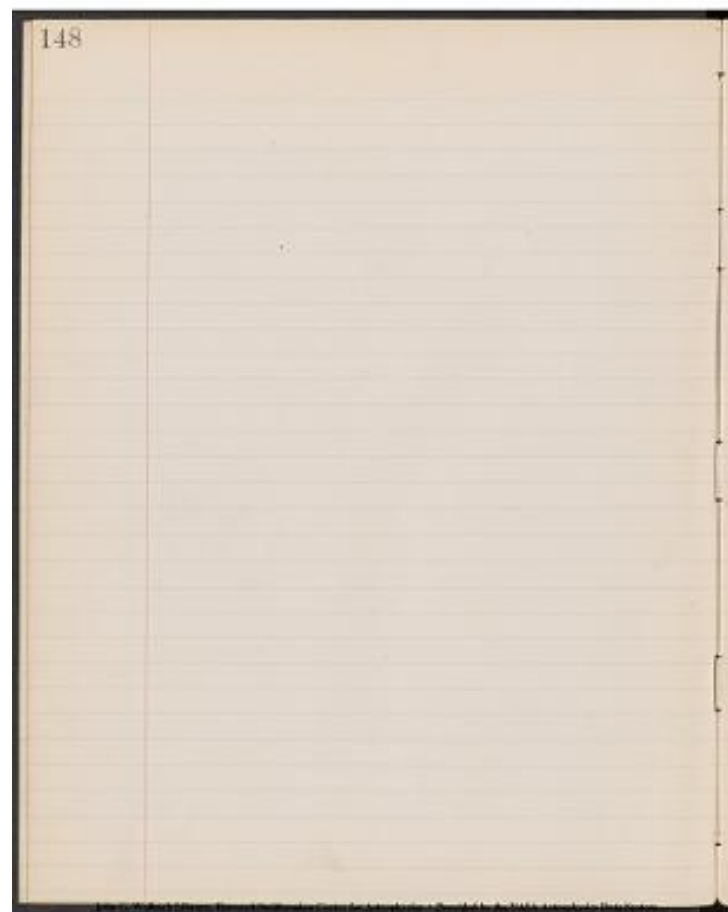
Enter in Vol XXVI Comparison with Vogel



Project PHaEDRA - Williamina P. Fleming - Notes on Draper Catalog;  
Accounts of Share-Holders of the Camera #15]  
Transcribed and Reviewed by Digital Volunteers  
Extracted Dec-02-2022 11:13:25

148

[[no input]]

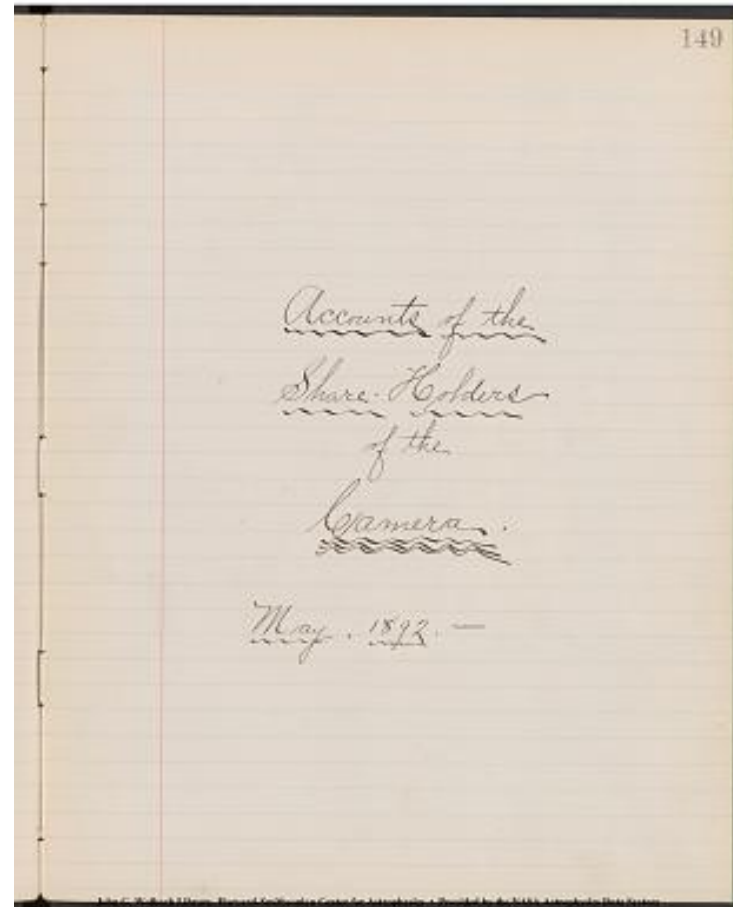


Project PHaEDRA - Williamina P. Fleming - Notes on Draper Catalog;  
Accounts of Share-Holders of the Camera #15]  
Transcribed and Reviewed by Digital Volunteers  
Extracted Dec-02-2022 11:13:25

149

Accounts of the  
Share Holders  
of the  
Camera.

May, 1892, -



Project PHaEDRA - Williamina P. Fleming - Notes on Draper Catalog;  
Accounts of Share-Holders of the Camera #[15]  
Transcribed and Reviewed by Digital Volunteers  
Extracted Dec-02-2022 11:13:25

1892 | |  
 April 22 | Camera & 1 Plate Holder. | \$ 24.00 |  
 April 22 | 2 Plate Holders | 2.00 |  
 May 7 | 3 Plate Holders | 2.00 |  
 | | \$ 29.00 paid |  
  
 May 3 | 12 dry 4x5 Seed Plates. | 7.80 (paid by Mrs. F.) |  
 May 14 | 1 Tripod. |  
 1893 | |  
 Feb 7 | 1000 Negative Preservers. | 2.50 (Paid by Mrs. F.) |

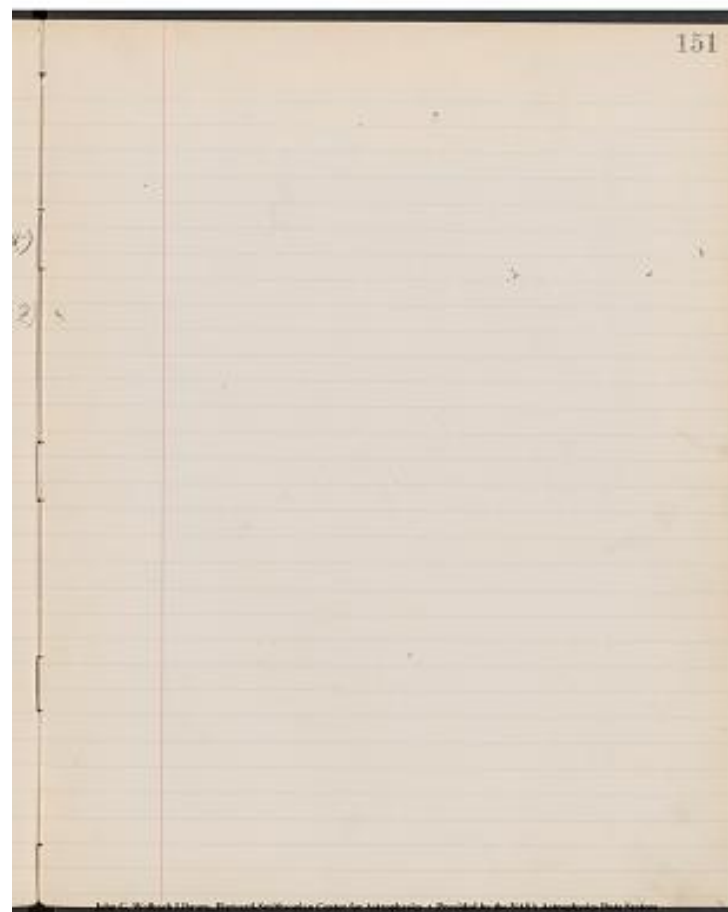
1 | Mrs. Fleming | \$ 3.22 |  
 2 | Miss Edith Gill | \$ 3.22 |  
 3 | Miss Hattie Stevens | \$ 3.22 |  
 4 | Miss Amy McKay | \$ 3.22 |  
 5 | Miss Mabel Stevens | \$ 3.22 |  
 6 | Miss Mabel Gill | \$ 3.22 |  
 7 | Miss Florence Cushman | \$ 3.22 |  
 8 | Miss Louisa Wells | \$ 3.22 |  
 9 | Miss E. F. Leland | \$ 3.22 |  
 [[total]] | | \$ 28.98 + .02 |

150  
 1892.  
 April 22. Camera & 1 Plate Holder. \$ 24.00  
 " " 2 Plate Holders 2.00  
 May 7 " 3 " 2.00  
 \$ 29.00 paid.  
  
 May 3 12 dry 4x5 Seed Plates 7.80 (paid by Mrs. F.)  
 May 14 1 Tripod.  
 1893.  
 Feb 7 1000 Negative Preservers 2.50 (paid by Mrs. F.)  
  
 1 Mrs. Fleming \$ 3.22  
 2 Miss Edith Gill " "  
 3 " Hattie Stevens " "  
 4 " Amy McKay " "  
 5 " Mabel Stevens " "  
 6 " Mabel Gill " "  
 7 " Florence Cushman " "  
 8 " Louisa Wells " "  
 9 " E. F. Leland " "  
 \$ 28.98 + .02

Project PHaEDRA - Williamina P. Fleming - Notes on Draper Catalog;  
 Accounts of Share-Holders of the Camera #15]  
 Transcribed and Reviewed by Digital Volunteers  
 Extracted Dec-02-2022 11:13:25

151

[[no input]]



Project PHaEDRA - Williamina P. Fleming - Notes on Draper Catalog;  
Accounts of Share-Holders of the Camera #15]  
Transcribed and Reviewed by Digital Volunteers  
Extracted Dec-02-2022 11:13:25

152

Mrs. M. Fleming

[[4 column table]]  
| | | |

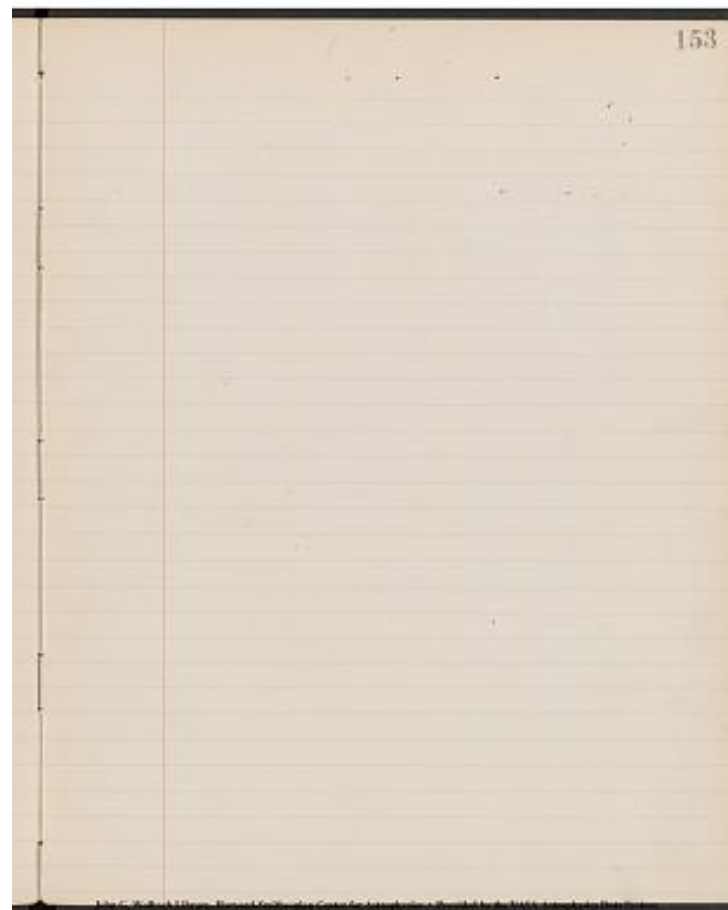
1892	To share of Camera & Plate Holders	\$3.22	paid
	To 3 doz. 4 x 5 Seed Plates @ .65	1.95	paid
	To 9 doz. 4 x 5 Seed Plates @ .65	5.85	paid
	To 2 doz. 4 x 5 Seed Plates @ .65	1.30	paid
Dec 23	To 1 doz. 4 x 5 Seed Plates @ .65	.65	paid

152	Mrs. M. Fleming		
1892	To share of Camera & Plate Holders	\$3.22	paid
	To 3 doz. 4 x 5 Seed Plates @ .65	1.95	
	To 9 doz. 4 x 5 Seed Plates @ .65	5.85	
	To 2 doz. 4 x 5 Seed Plates @ .65	1.30	
Dec 23	To 1 doz. 4 x 5 Seed Plates @ .65	.65	

Project PHaEDRA - Williamina P. Fleming - Notes on Draper Catalog;  
Accounts of Share-Holders of the Camera #[15]  
Transcribed and Reviewed by Digital Volunteers  
Extracted Dec-02-2022 11:13:25

153

[[no input]]



Project PHaEDRA - Williamina P. Fleming - Notes on Draper Catalog;  
Accounts of Share-Holders of the Camera #15]  
Transcribed and Reviewed by Digital Volunteers  
Extracted Dec-02-2022 11:13:25

154

Miss Edith F. Gill

[[4 column table]]  
| | | |

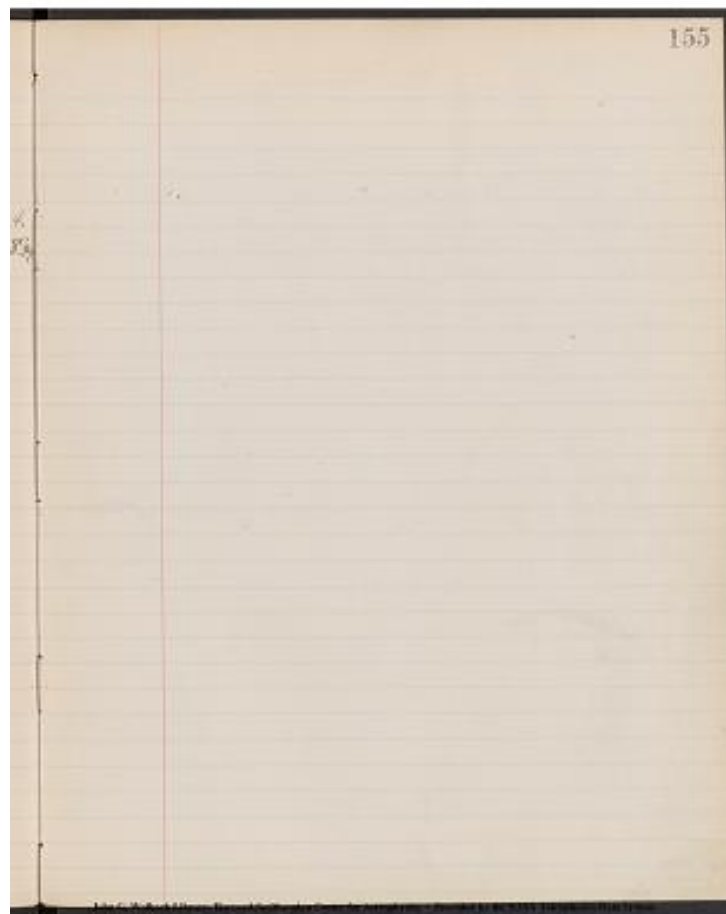
| | To Share of Camera & Plate Holders | \$3.22 | paid |  
| 1892 | To 1 doz 4x5 Seed Plates | .65 | | paid |

154	Miss Edith F. Gill		
	To Share of Camera & Plate Holders	\$3.22	paid
July 2	1 doz 4x5 Seed Plates	.65	"
Aug 5	1 " " " "	.65	"
Nov 10	1 " " " "	.65	"
May 76	2 " 4x5 " " "	1.30	" Feb 89

Project PHaEDRA - Williamina P. Fleming - Notes on Draper Catalog;  
Accounts of Share-Holders of the Camera #15]  
Transcribed and Reviewed by Digital Volunteers  
Extracted Dec-02-2022 11:13:25

155

[[no input]]



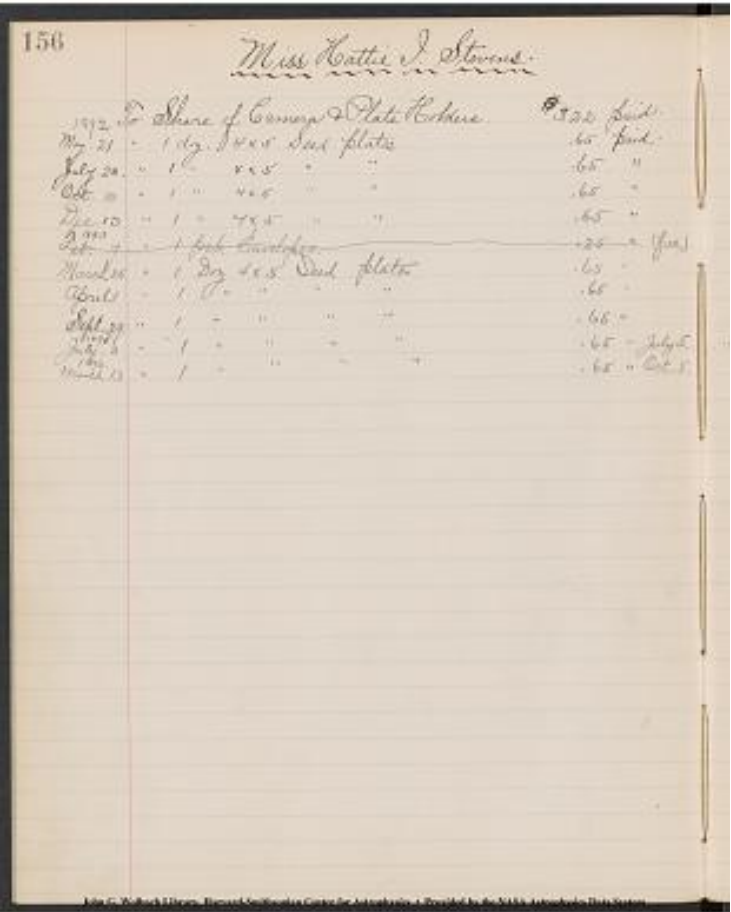
Project PHaEDRA - Williamina P. Fleming - Notes on Draper Catalog;  
Accounts of Share-Holders of the Camera #15]  
Transcribed and Reviewed by Digital Volunteers  
Extracted Dec-02-2022 11:13:25

Miss Hattie I. Stevens

[[4 column table]]  
| | | |

1892	To Share of Camera & Plate Holders	\$3.22	paid.	
May 21	To 1 doz. 4x5 Seed Plates	.65	paid.	
July 23.	To 1 doz. 4x5 Seed Plates	.65	paid.	
Oct 10	To 1 doz. 4x5 Seed Plates	.65	paid.	
Dec 13	To 1 doz. 4x5 Seed plates	.65	paid.	
~~strike through~~	1893 Feb. 7	To 1 pck. Envelopes.	.25	paid. (free)
~~strike through~~				
March 25	To 1 doz. 4x5 Seed plates	.65	paid.	
April 1	To 1 doz. 4x5 Seed plates	.65	paid.	
Sept. 29.	To 1 doz. 4x5 Seed plates	.65	paid.	
1895 July. 3	To 1 doz. 4x5 Seed plates	.65	paid. July 5.	
1896 March 13.	To 1 doz. 4x5 Seed plates	.65	paid. Oct. 5.	

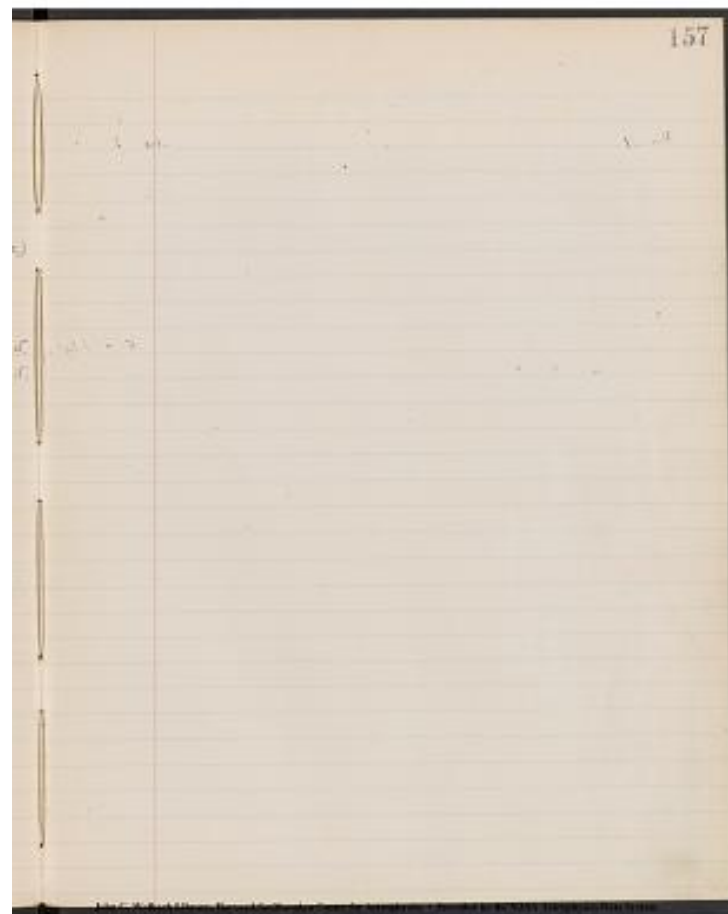
John G. Wolbach Library Harvard-Smithsonian Center for Astrophysics •  
Provided by the NASA Astrophysics Data System



Project PHaEDRA - Williamina P. Fleming - Notes on Draper Catalog;  
Accounts of Share-Holders of the Camera #15]  
Transcribed and Reviewed by Digital Volunteers  
Extracted Dec-02-2022 11:13:25

157

[[no input]]

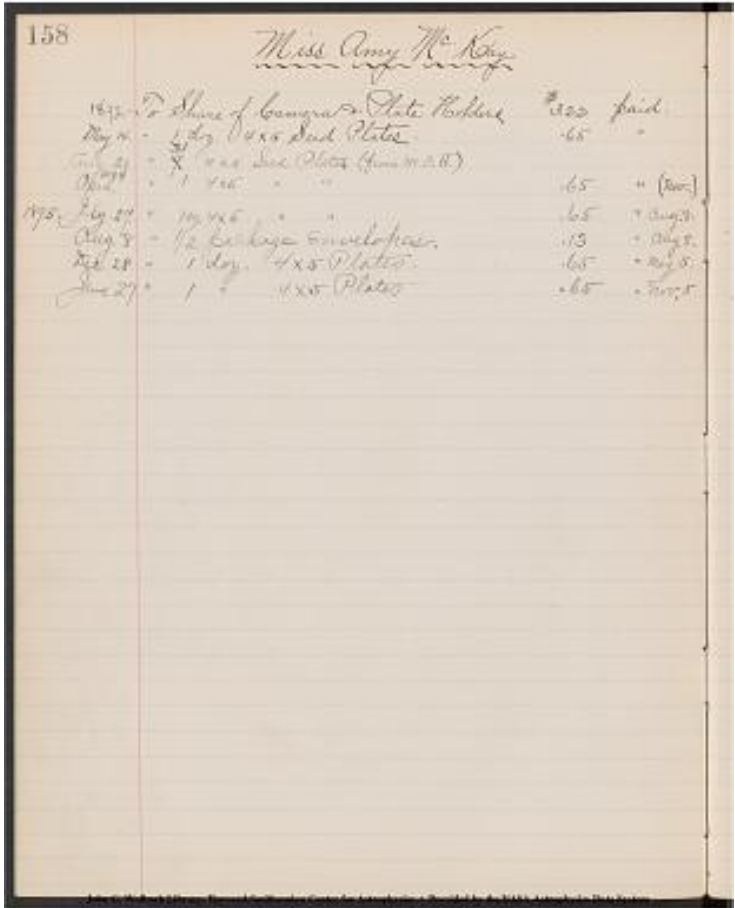


Project PHaEDRA - Williamina P. Fleming - Notes on Draper Catalog;  
Accounts of Share-Holders of the Camera #[15]  
Transcribed and Reviewed by Digital Volunteers  
Extracted Dec-02-2022 11:13:25

Miss Amy McKay

[[4 column table]]  
| | | |

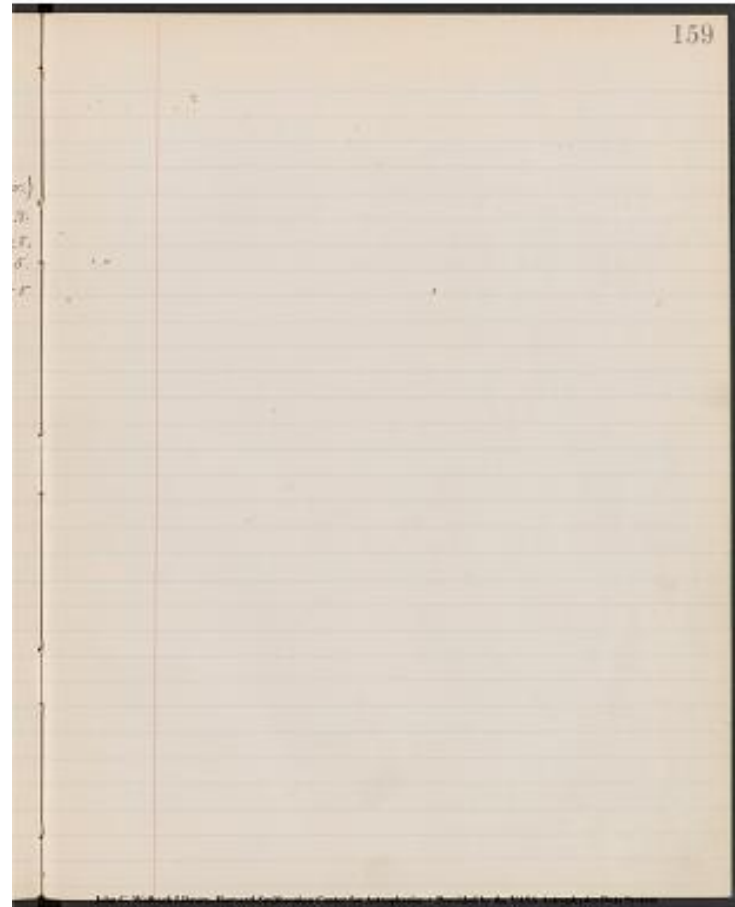
1892	To Share of Camera & Plate Holders	\$3.22	paid.
May 14	To 1 doz. 4x5 Seed Plates	.65	paid.
Aug 29	To 1 doz. 4x5 Seed Plates (from M.C.S)	.65	paid (Nov)
April 1894	To 1 doz. 4x5 Seed Plates	.65	paid Aug 8.
1895 July 27	To 1 doz. 4x5 Seed Plates	.13	paid Aug 8
Aug 8	To 1/2 package envelopes	.65	Paid May 5
Dec 28	To 1 doz. 4x5 Plates	.65	Paid May 5
June 27	To 1 doz. 4x5 Plates	.65	Paid Nov 5



Project PHaEDRA - Williamina P. Fleming - Notes on Draper Catalog;  
Accounts of Share-Holders of the Camera #15]  
Transcribed and Reviewed by Digital Volunteers  
Extracted Dec-02-2022 11:13:25

159

[[no input]]



Project PHaEDRA - Williamina P. Fleming - Notes on Draper Catalog;  
Accounts of Share-Holders of the Camera #15]  
Transcribed and Reviewed by Digital Volunteers  
Extracted Dec-02-2022 11:13:25

160

Miss Malel to tenants

To share of ????? & Plate ???? \$3.22 paid  
1842.

May. 28 | " 1 day. Dhx5 Seed plate .65. paid,

July 30 | " " " " .65 "

Aug. 9 | " 2 " " " 1.30 "

Nov. 14 | " 1 " 4x5 " " .65 "

Feb 1893 1 | " / " 4x5 " " .65 "

[[Crossed out]] Feb. 1 | " 1 ??? . ??????. (100) .25 paid(fee)

July 3 | " 1 day 4x5 " " .65 paid

" / | " 1 " " " " .65 "

Aug. 31 | " 1 " " " " .65 "

Dec. 2 | " 1 " " " " .65 "  
1894

June | " 1 " 4x5 " " .65 "

Nov. 6 | " 1 day 4x5 " " .65 " Nov. 16

Dec. 15 | " 1 day 4x5 " " .65 " Feb. 1895  
1895

June 26 | " 1 " 4x5 " " .65 " June. 4.95

July. 27 | " 1 " 4x5 " " .65 ????

Aug. 8 | " 1/2 package ???? .13 paid Aug 8.

(1896)Feb. 29. | " 1 day. 4x5 " " .65 paid. Feb 29

1896. April. 25 | " 1 " 4x5 Seed Plates .65 paid Nov. 5

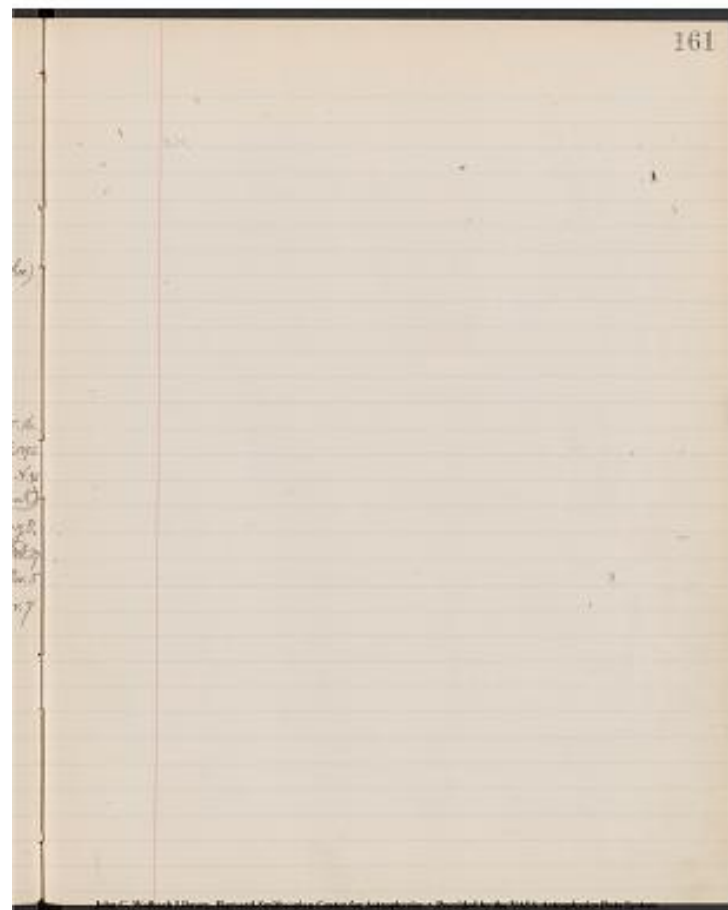
1896. July 1 | " 1 " 4x5 " " .65 " Nov.9

160	Miss Mabel G. Stevens.
May 28	To Share of General & Plate Holders \$3.22 paid
July 20	1 day 4x5 Seed Plate .65 paid.
Aug 1	2 " " " " .65 "
Nov 14	1 " 4x5 " " .65 "
Dec 2	1 " 4x5 " " .65 "
Feb 7	1 package Envelopes (100) .25 paid (fee)
July 3	1 day 4x5 " " .65 paid
Aug 9	2 " " " " .65 "
Aug 31	1 " " " " .65 "
Dec 2	1 " 4x5 " " .65 "
June	1 " 4x5 " " .65 "
Nov 6	1 day 4x5 " " .65 " Nov. 16
Dec 15	1 day 4x5 " " .65 " Feb. 1895
Jan 26	1 " 4x5 " " .65 " Feb. 1895
July 27	1 " 4x5 " " .65 (1896)
Aug 8	1/2 package Envelopes .13 paid Aug 8.
Feb 29	1 day 4x5 " " .65 paid Feb 29
April 25	1 " 4x5 Seed Plates .65 paid Nov. 5
July 1	1 " 4x5 " " .65 " Nov. 9

Project PHaEDRA - Williamina P. Fleming - Notes on Draper Catalog;  
Accounts of Share-Holders of the Camera #15]  
Transcribed and Reviewed by Digital Volunteers  
Extracted Dec-02-2022 11:13:25

161

[[no input]]



Project PHaEDRA - Williamina P. Fleming - Notes on Draper Catalog;  
Accounts of Share-Holders of the Camera #[15]  
Transcribed and Reviewed by Digital Volunteers  
Extracted Dec-02-2022 11:13:25

Miss Mabel Gill

[[4 column table]]  
| | | |

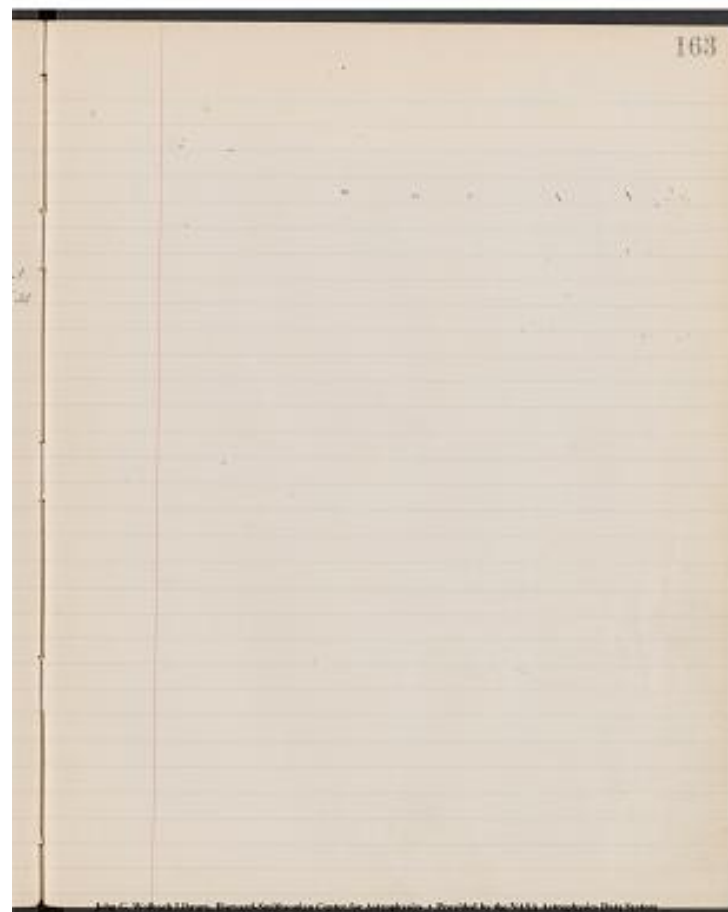
1892	To Share of Camera & Plate Holders	\$3.22	paid.
June 4	To 1 doz. 4x5 Seed Plates	.65	paid.
June 4	To 1 doz. 4x5 Seed Plates	.65	Paid
Aug 1	To 1 doz. 4x5 Seed Plates	.65	Paid
Oct 3	To 1 doz. 4x5 Seed Plates	.65	Paid
Dec 5	To 1 doz. 4x5 Seed Plates	.65	Paid
1893 March 10	To 1 doz. 4x5 Seed Plates	.65	Paid
June 1	To 1 doz. 4x5 Seed Plates	.65	Paid
Aug 21	To 1 doz. 4x5 Seed Plates	1.30	Paid Oct 21
1894 Sept 14	To 1 doz. 4x5 Seed Plates	.65	Paid

162	Miss Mabel Gill		
	To Share of Camera & Plate Holders	\$3.22	paid.
1892	June 4	1 doz 4x5 Seed Plates	.65
	Aug 1	1 doz 4x5 Seed Plates	.65
	Oct 3	1 doz 4x5 Seed Plates	.65
	Dec 5	1 doz 4x5 Seed Plates	.65
1893	March 10	1 doz 4x5 Seed Plates	.65
	June 1	1 doz 4x5 Seed Plates	.65
	Aug 21	1 doz 4x5 Seed Plates	1.30
	Oct 21		1.30
1894	Sept 14	1 doz 4x5 Seed Plates	.65

Project PHaEDRA - Williamina P. Fleming - Notes on Draper Catalog;  
Accounts of Share-Holders of the Camera #[15]  
Transcribed and Reviewed by Digital Volunteers  
Extracted Dec-02-2022 11:13:25

163

[[no input]]

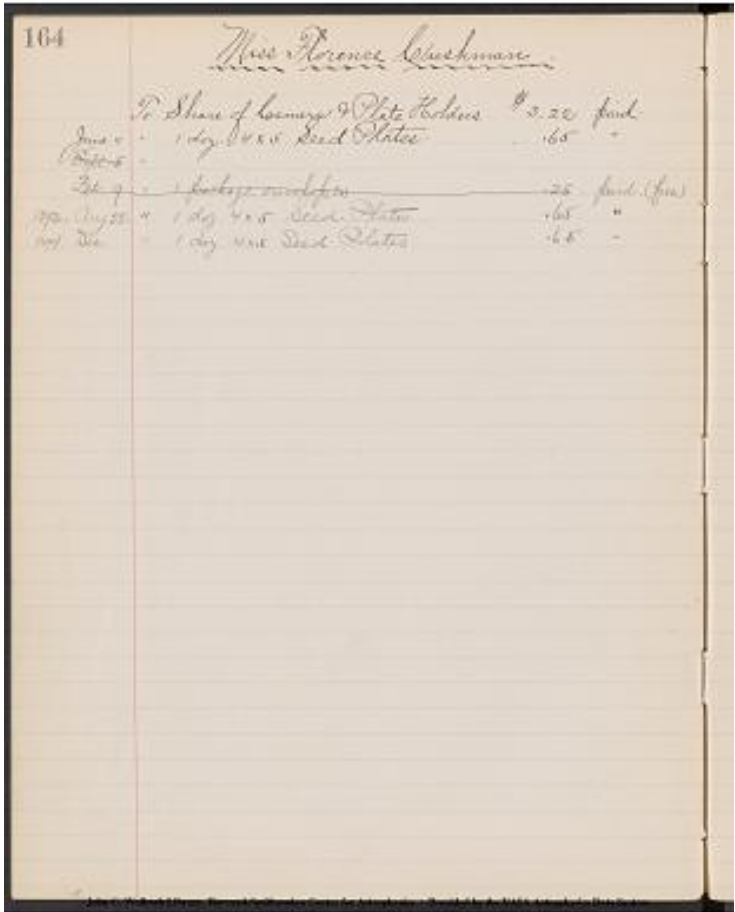


Project PHaEDRA - Williamina P. Fleming - Notes on Draper Catalog;  
Accounts of Share-Holders of the Camera #15]  
Transcribed and Reviewed by Digital Volunteers  
Extracted Dec-02-2022 11:13:25

Miss Florence Cushman

[[4 column table]]  
| | | |

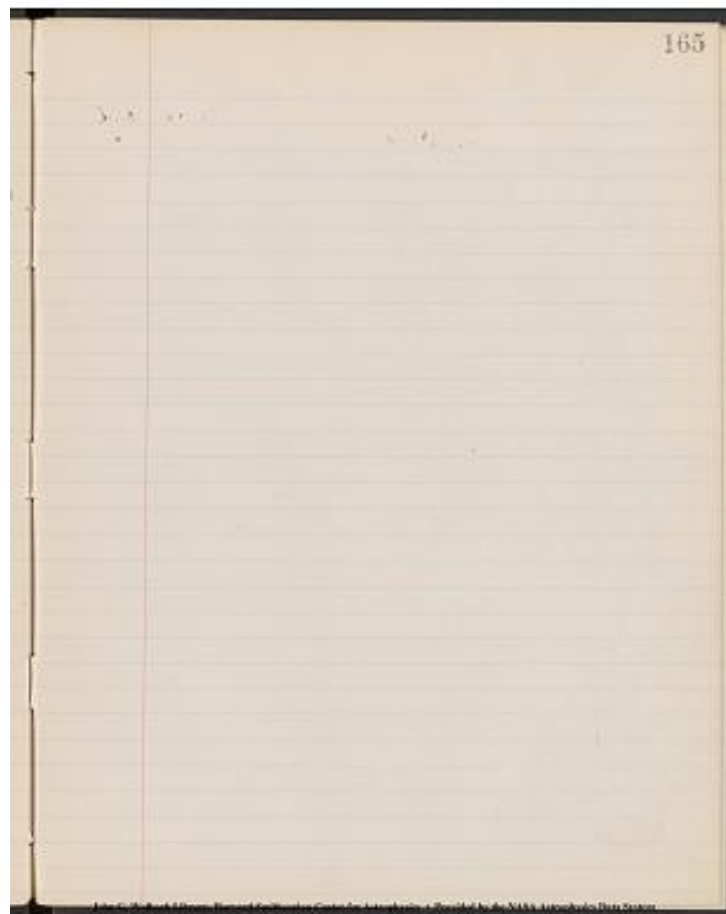
| | To Share of Camera & Plate Holders | \$3.22 | paid. |  
June 11 | To 1 doz. 4x5 Seed Plates | .65 | paid. |  
[[strikethrough]] Sept. 5 [[/strikethrough]] | To | | |  
[[strikethrough]] Feb. 9 | To 1 package envelopes | .25 [[/strikethrough]]  
paid (free) |  
1893 Aug 28 | To 1 doz. 4x5 Seed Plates | .65 | paid |  
1894 Dec | To 1 doz. 4x5 Seed Plates |.65 | paid |



Project PHaEDRA - Williamina P. Fleming - Notes on Draper Catalog;  
Accounts of Share-Holders of the Camera #[15]  
Transcribed and Reviewed by Digital Volunteers  
Extracted Dec-02-2022 11:13:25

165

[[no input]]



Project PHaEDRA - Williamina P. Fleming - Notes on Draper Catalog;  
Accounts of Share-Holders of the Camera #15]  
Transcribed and Reviewed by Digital Volunteers  
Extracted Dec-02-2022 11:13:25

Miss Louisa D. Wells

[[4 column table]]

| | | |

1893 | To Share of Camera & Plate Holders | \$3.22 | paid |  
 June 18 | To 1 doz. 4x5 Seed Plates | .65 | paid |  
 Sept. 20 | To 1 doz. 4x5 Seed Plates | .65 | paid |  
 Sept. 28 | To 1 doz. 4x5 Seed Plates | .65 | paid |  
 Jan. 21, 1893 | To 1 doz. 4x5 Seed Plates | .65 | paid |  
 Jan. 31, 1893 | To 1 doz. 4x5 Seed Plates | .65 | paid |  
~~Feb. 7, 1893 | To 1 pack. Envelopes (100) | .25 | paid |~~  
~~(free) |~~  
 Feb. 7, 1893 | 1 Screw | .35 | paid |  
~~[[/strickethrough]] Sep. [[/strickethrough]] Oct. | To 1 doz. 4x5 Seed Plates~~  
~~.65 (free. Money divided amongst shareholders) |~~  
 1894 March | To 1/2 package of envelopes | .13 |  
 Feb. or March | To 1 box plates | .65 | (free) |  
 1895 Jan | To 1 box plates | .65 | paid May. 15. |  
 May | To 1 box plates | .65 | paid July. 12. |  
 June. 12 | To 1 box plates | .65 | (discount) |  
 1896 Jan 4 | To 1 box plates | .65 | paid March. 6. 96 |  
 Feb. 1 | To Box 1 box plates | .65 | paid March. 6. 96. |  
 May 2 | To 1 box plates | .65 | paid Aug. 6. '96. |  
 Aug ~~[[/strickethrough]]~~ July ~~[[/strickethrough]]~~ 15 | To 1 box plates | .65 |  
 paid Aug. 22. 96 |

John G. Wolbach Library, Harvard-Smithsonian Center for Astrophysics  
 • Provided by NASA Astrophysics Data System

166

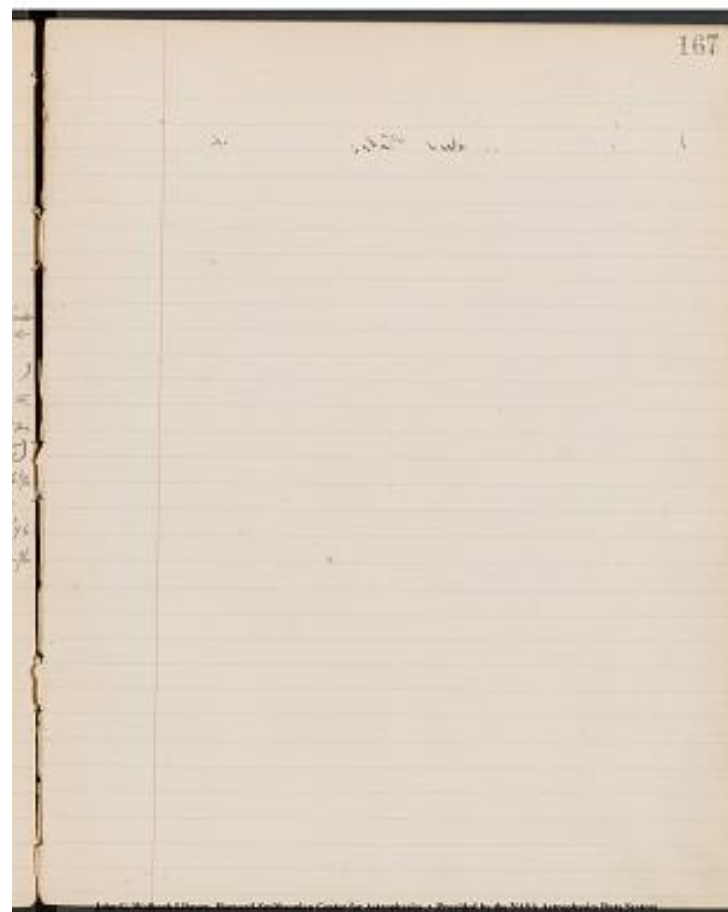
# Miss Louisa D. Wells

1893	To Share of Camera & Plate Holders	\$3.22	paid
June 18	1 doz. 4x5 Seed Plates	.65	paid
Sept. 20	"	.65	"
Sept. 28	"	.65	"
Jan. 21, 93	"	.65	"
Jan. 31, "	"	.65	"
Feb. 7, "	1 Screw	.35	(free)
Sept. 20	1 doz. 4x5 Seed plates	.65	(free. Money divided amongst shareholders)
Oct. 1	1/2 package of envelopes	.13	(free)
March	1 box plates	.65	(free)
May	"	.65	paid May 15.
June 12	"	.65	paid July 12.
Jan. 4	"	.65	(discount)
Feb. 1	"	.65	paid March 6. 96.
May 2	"	.65	"
Aug. 15	"	.65	" Aug. 6. '96.
Aug. 22	"	.65	" Aug. 22. 96.

Project PHaEDRA - Williamina P. Fleming - Notes on Draper Catalog;  
 Accounts of Share-Holders of the Camera #15  
 Transcribed and Reviewed by Digital Volunteers  
 Extracted Dec-02-2022 11:13:25

167

[[no input]]



Project PHaEDRA - Williamina P. Fleming - Notes on Draper Catalog;  
Accounts of Share-Holders of the Camera #15]  
Transcribed and Reviewed by Digital Volunteers  
Extracted Dec-02-2022 11:13:25

Miss E. F. Leland.

[[4 column table]]

| | | |

To Share of Camera & Plate Holders	\$3.22	paid.	
1893. June 25	To 1 doz. 4x5 Seed Plates	.65	paid.
Sept.	To 1 doz. 4x5 Seed Plates	.65	paid.
June.5	To 1 doz. 4x5 Seed Plates	.65	paid.

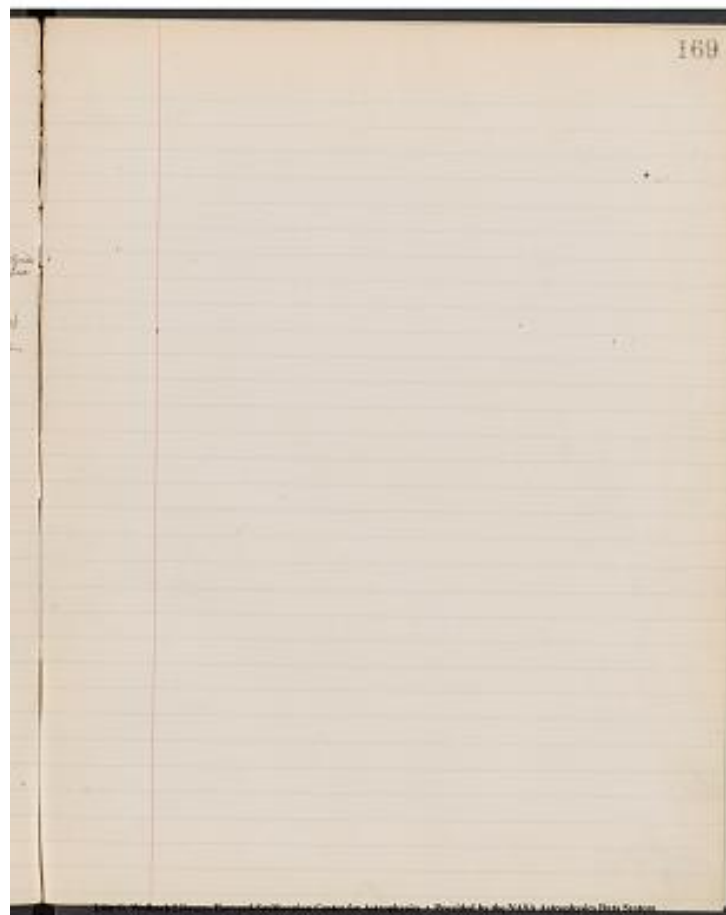
| July 11 | To 1 doz. 4x5 Seed Plates | .65 | paid. |  
| Aug.11 | To 1 doz. 4x5 Seed Plates | .65 | paid. |  
| 1894 March | To 1 doz. 4x5 Seed Plates | .65 | (free. money divided  
among share)  
June	To 2 doz. 4x5 Seed Plates	1.30	paid.
Aug.2	To 1 doz. 4x5 Seed Plates	.65	Paid (Feb 7)
1895 Feb 7	To 1 doz. 4x5 Seed Plates	.65	paid June.
Aug.3	To 1 doz. 4x5 Seed Plates	.65	Paid.

168	Miss E. F. Leland		
1893 June 25	To Share of Camera & Plate Holders	\$3.22	paid.
Sept	1 doz 4x5 Seed Plates	.65	
June 5	1 doz 4x5 Seed Plates	.65	
July 11	1 doz 4x5 Seed Plates	.65	
Aug 11	1 doz 4x5 Seed Plates	.65	
Feb 7	1 doz 4x5 Seed Plates	.65	(free money divided among share)
June	2 doz 4x5 Seed Plates	1.30	paid.
Aug 2	1 doz 4x5 Seed Plates	.65	Paid (Feb 7)
1895 Feb 7	1 doz 4x5 Seed Plates	.65	paid June.
Aug 3	1 doz 4x5 Seed Plates	.65	Paid.

Project PHaEDRA - Williamina P. Fleming - Notes on Draper Catalog;  
Accounts of Share-Holders of the Camera #15]  
Transcribed and Reviewed by Digital Volunteers  
Extracted Dec-02-2022 11:13:25

169

[[no input]]



Project PHaEDRA - Williamina P. Fleming - Notes on Draper Catalog;  
Accounts of Share-Holders of the Camera #15]  
Transcribed and Reviewed by Digital Volunteers  
Extracted Dec-02-2022 11:13:25

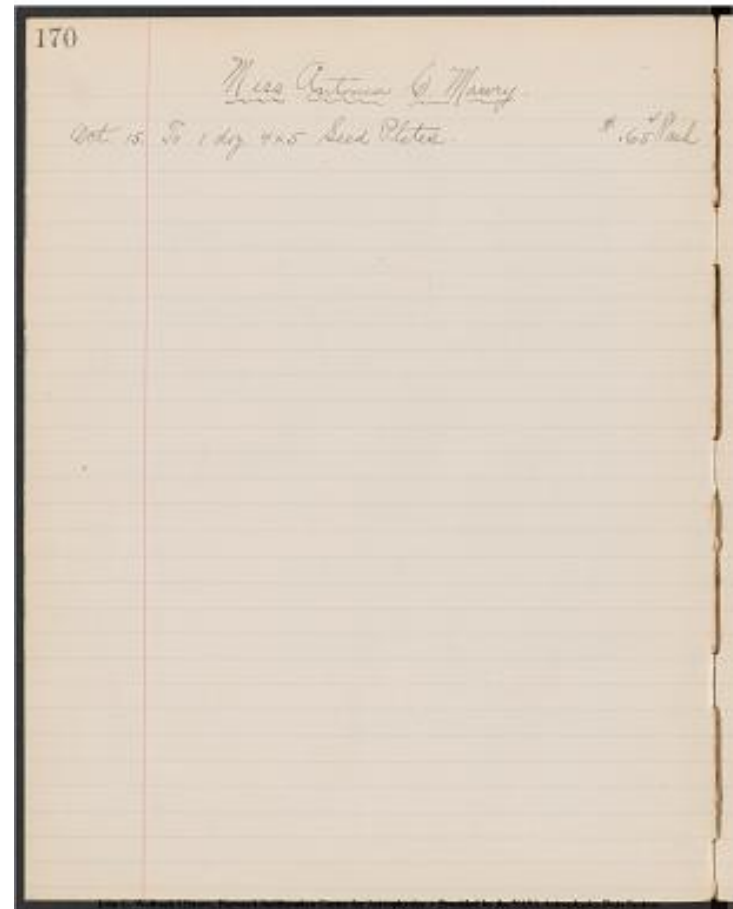
170

Miss Antonia C. Maury.

[[4 column table]]

| | | |

| Oct. 15. | To 1 doz. 4x5 Seed Plates. | \$.65 | Paid |



Project PHaEDRA - Williamina P. Fleming - Notes on Draper Catalog;  
Accounts of Share-Holders of the Camera #15]  
Transcribed and Reviewed by Digital Volunteers  
Extracted Dec-02-2022 11:13:25

171

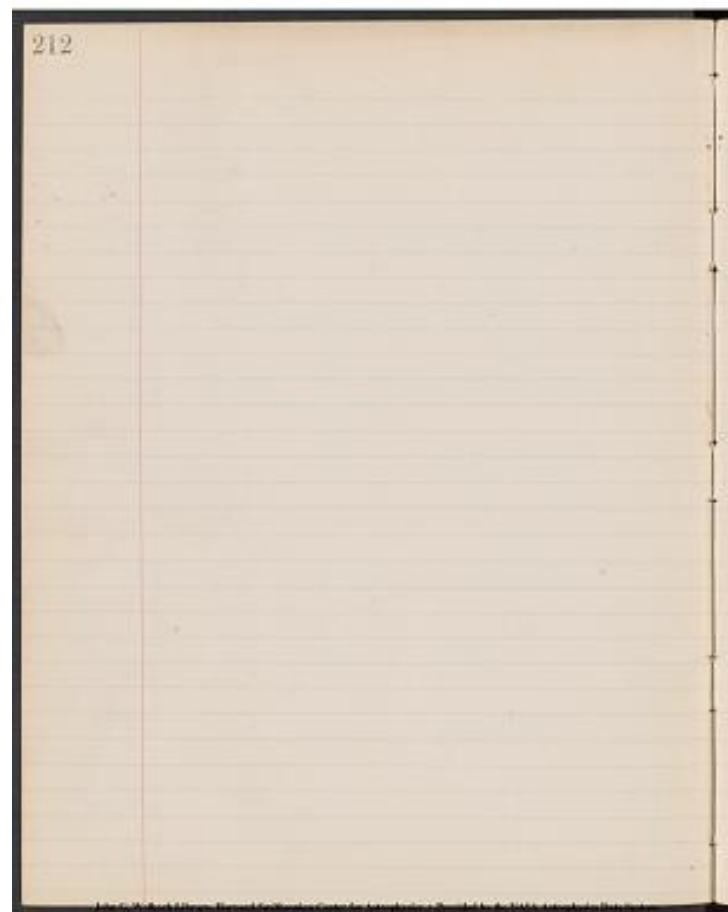
[[no input]]



Project PHaEDRA - Williamina P. Fleming - Notes on Draper Catalog;  
Accounts of Share-Holders of the Camera #15]  
Transcribed and Reviewed by Digital Volunteers  
Extracted Dec-02-2022 11:13:25

212

[[no input]]



Project PHaEDRA - Williamina P. Fleming - Notes on Draper Catalog;  
Accounts of Share-Holders of the Camera #[15]  
Transcribed and Reviewed by Digital Volunteers  
Extracted Dec-02-2022 11:13:25

For Mrs. Bailey's Xmas Gift. 1896.

[[4 column table]]

| | | |

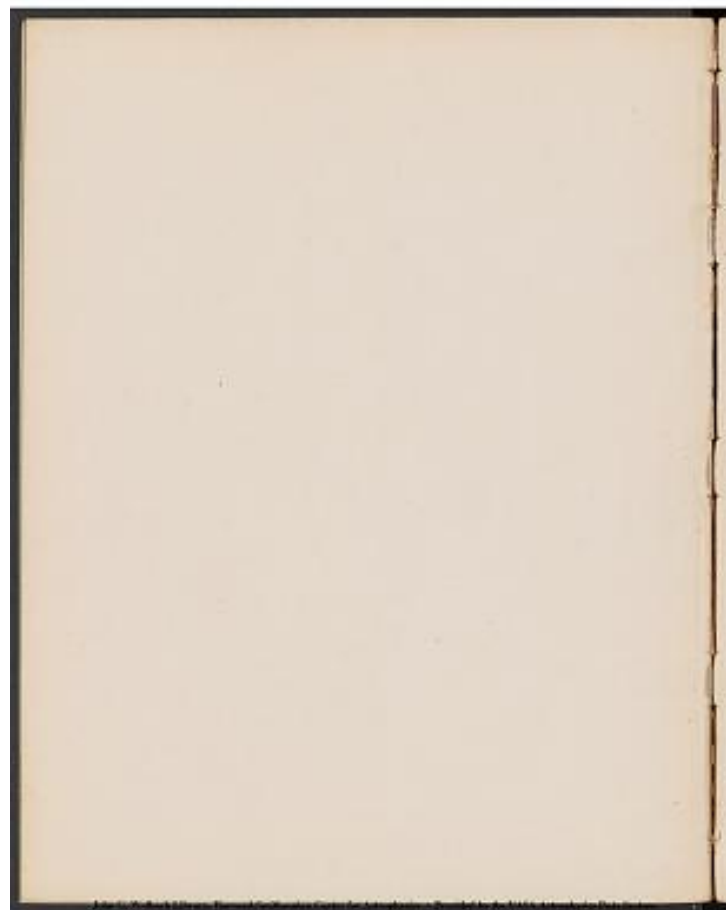
		Ms. Fleming.		\$1.50		Sept. 29	
	1	L. D. Wells.		\$1.50		Sept. 16	
		Q. E. Woods.		1.50		Sept. 16	
		F. Cushman.		1.50		Oct. 6	
		A. J. McKay.		1.50		Oct. 6	
		<del>E. J. Stevens.</del>				<del>[[/strikethrough]]</del>	
		E. F. Leland.		1.50		Oct. 5	
		E. F. Gill.		1.50		Sept. 29	
		M. A. Gill.		1.50		Sept. 29	
		E. G. Wolffe.		1.		Oct 1--	
		M. C. Stevens.		1.50		Oct. 6	
		L. Hodgdon.					
		<del>Mrs. Eddy.</del>					
		Miss <del>Leavitt</del> .		.50		" 17	

For Mrs. Bailey's Xmas Gift. 1896. 213

Ms. Fleming.	#	1.50	Sept. 29
L. D. Wells.	#	1.50	Sept. 16
Q. E. Woods.		1.50	Sept. 16
F. Cushman.		1.50	Oct. 6
A. J. McKay.		1.50	Oct. 6
<del>E. J. Stevens.</del>			
E. F. Leland.		1.50	Oct. 5
E. F. Gill.		1.50	Sept. 29
M. A. Gill.		1.50	Sept. 29
E. G. Wolffe.		1.	Oct. 1--
M. C. Stevens.		1.50	Oct. 6
L. Hodgdon.			
<del>Mrs. Eddy.</del>			
Miss Leavitt.		.50	" 17

Project PHaEDRA - Williamina P. Fleming - Notes on Draper Catalog;  
Accounts of Share-Holders of the Camera #15]  
Transcribed and Reviewed by Digital Volunteers  
Extracted Dec-02-2022 11:13:25

[[blank page]]



Project PHaEDRA - Williamina P. Fleming - Notes on Draper Catalog;  
Accounts of Share-Holders of the Camera #15]  
Transcribed and Reviewed by Digital Volunteers  
Extracted Dec-02-2022 11:13:25

[[blank page]]



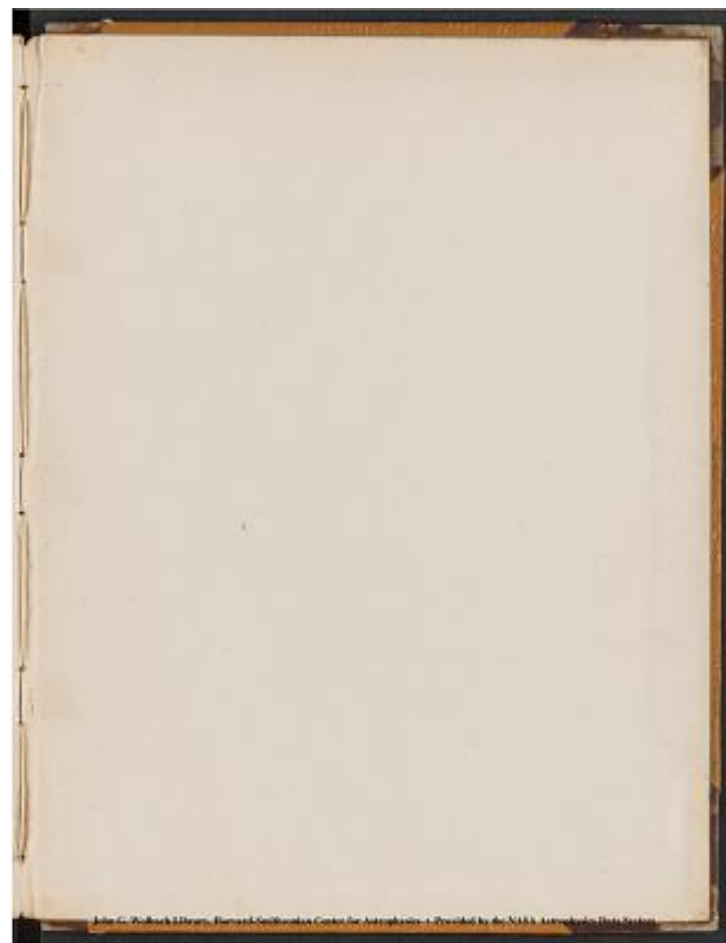
Project PHaEDRA - Williamina P. Fleming - Notes on Draper Catalog;  
Accounts of Share-Holders of the Camera #[15]  
Transcribed and Reviewed by Digital Volunteers  
Extracted Dec-02-2022 11:13:25

[[blank page]]



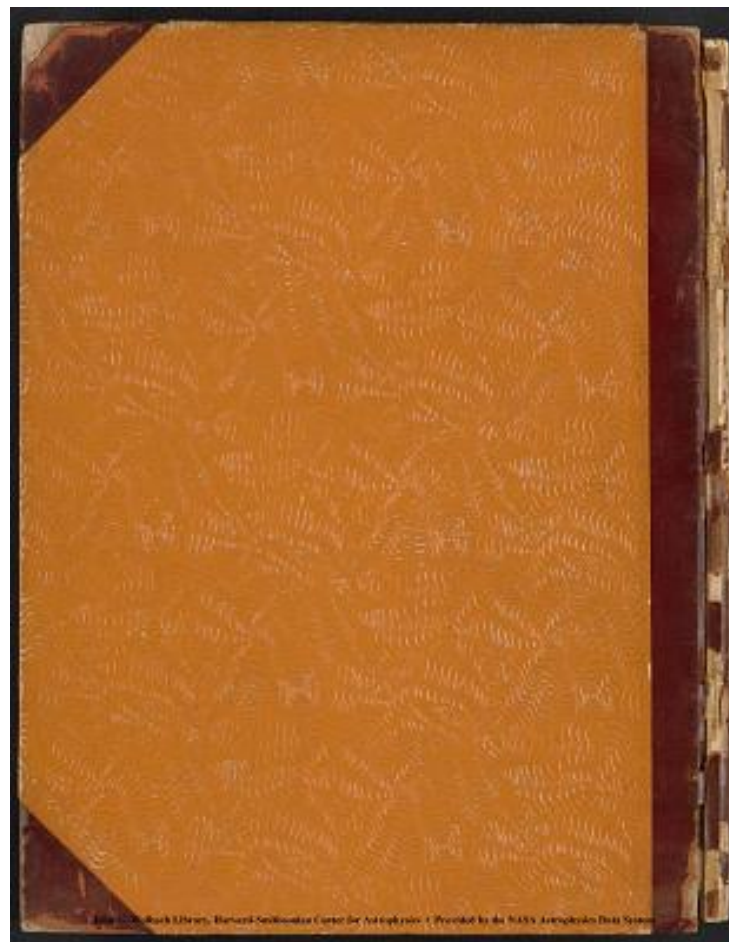
Project PHaEDRA - Williamina P. Fleming - Notes on Draper Catalog;  
Accounts of Share-Holders of the Camera #15]  
Transcribed and Reviewed by Digital Volunteers  
Extracted Dec-02-2022 11:13:25

[[blank page]]



Project PHaEDRA - Williamina P. Fleming - Notes on Draper Catalog;  
Accounts of Share-Holders of the Camera #[15]  
Transcribed and Reviewed by Digital Volunteers  
Extracted Dec-02-2022 11:13:25

[[back cover]]



Project PHaEDRA - Williamina P. Fleming - Notes on Draper Catalog;  
Accounts of Share-Holders of the Camera #[15]  
Transcribed and Reviewed by Digital Volunteers  
Extracted Dec-02-2022 11:13:25



## Smithsonian Institution

*Harvard-Smithsonian Center for Astrophysics*

The mission of the Smithsonian is the increase and diffusion of knowledge - shaping the future by preserving our heritage, discovering new knowledge, and sharing our resources with the world. Founded in 1846, the Smithsonian is the world's largest museum and research complex, consisting of 19 museums and galleries, the National Zoological Park, and nine research facilities. Become an active part of our mission through the Transcription Center. Together, we are discovering secrets hidden deep inside our collections that illuminate our history and our world.

Join us!

The Transcription Center: <https://transcription.si.edu>

On Facebook: <https://www.facebook.com/SmithsonianTranscriptionCenter>

On Twitter: [@TranscribeSI](https://twitter.com/TranscribeSI)

Connect with the Smithsonian

Smithsonian Institution: [www.si.edu](http://www.si.edu)

On Facebook: <https://www.facebook.com/Smithsonian>

On Twitter: [@smithsonian](https://twitter.com/smithsonian)